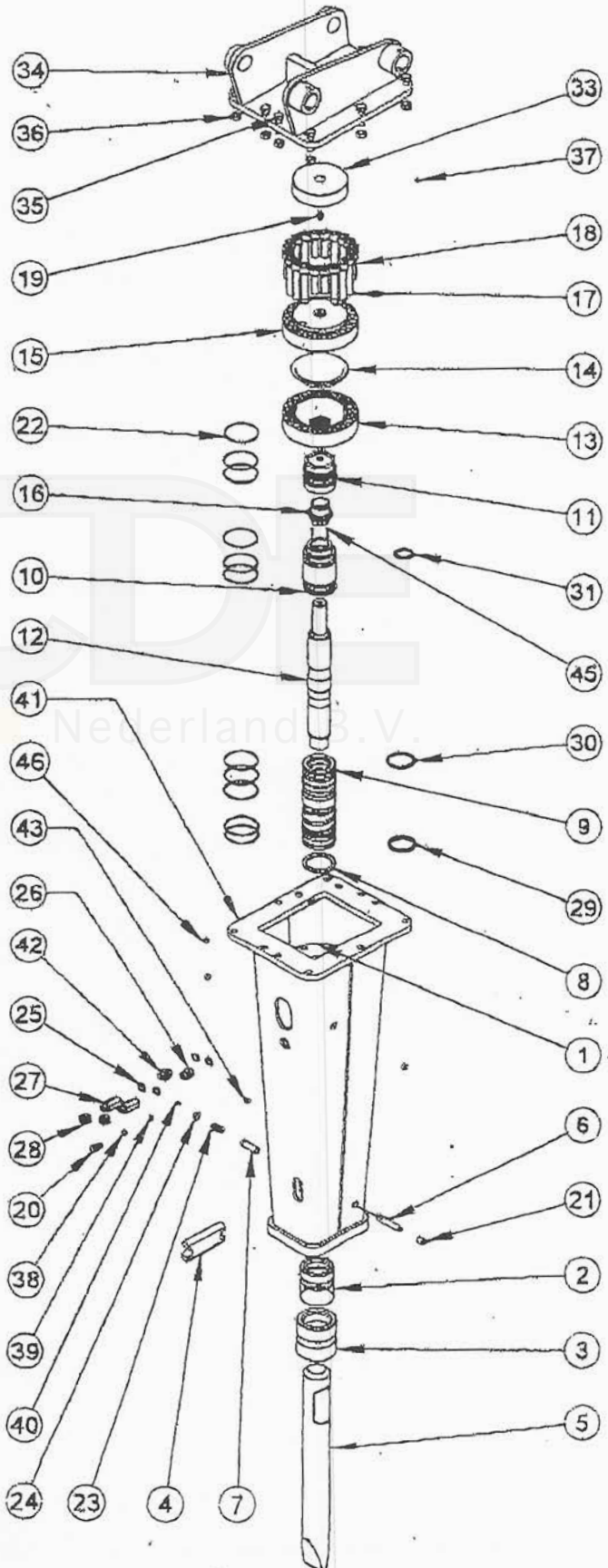
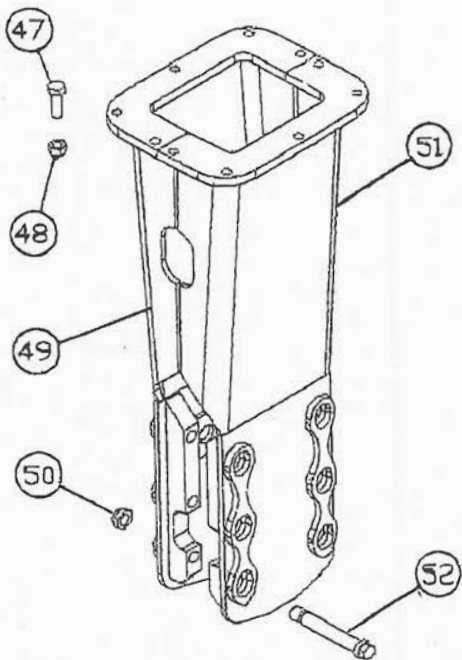




DMS 680



DM 680





SPARE PARTS DM/DMS 680

(Refer to the exploded drawing of the previous page)

RIF.	CODE	QUANTITY	DESCRIPTION
01	B.0651010	01	Monobloc
02	B.0651020	01	Internal support bush
03	B.0651030	01	External support bush
04	B.0651040	01	Tool retainer
05	B.0651050	01	Chisell Tool
	B.0651060	01	Conical Tool
06	B.0201070	01	Pin
07	B.0431040	01	Pin for the tool retainer
08	B.0652010	01	Body ring
09	B.0652021	01	Lower body bush
10	B.0652043	01	Upper body bush
11	B.0653014	01	Distributor bush
12	B.0652030	01	Piston
13	B.0654010	01	Accumulator basement
14	B.0504020	01	Diaphragm
15	B.0654020	01	Accumulator cover
16	B.0653210	01	Distributor valve
17	A.00030607	12	Screw
18	A.00030606	08	Screw
19	A.00053464	01	Nitrogen valve
20	A.00053236	01	Valve
21	A.03330371	01	Elastic pin
22	A.00014275	11	O - ring
23	A.03330429	01	Spring
24	A.00030538	01	Plug
25	A.00010410	04	Bonded
26	A.00332122	01	Nipple
27	A.03330504	02	Connection
28	A.00331340	02	Pug
29	A.00010610	01	Seal
30	A.00015011	01	Seal
31	A.00010224	01	Seal
33	B.0654030	01	Upper pad
34		01	Top Plate
35	A.00030084	10	Screw
36	A.00330124	10	Nut
37	A.00010366	01	O - ring
38	A.00010229	01	O - ring
39	A.00010227	01	O - ring
40	A.00010228	01	Backup ring
41	B.0655990	01	DM Case
42	B.0263050	01	Nipple
43	A.00440159	01	Greaser
45	B.0653030	02	Piloting small piston
46	A.00030624	07	Plug



SPARE PARTS DM 680 CASE

RIF.	CODE	QUANTITY	DESCRIPTION
47	A.00030084	10	Screw
48	A.00330124	10	Nut
49	B.0655600	01	Left case
50	A.00330077	06	Nut
51	B.0655650	01	Right case
52	B.0655110	06	Tie rod bolt for the case

ACDE
Nederland B.V.



2.2 Technical Features DM / DMS 680

TECHNICAL FEATURES	Units of Measurements	VALUE
Energy per stroke	J	1200
Maximum Frequency	s/min	900
Maximum oil flow	l/min	90 – 130
Maximum working pressure	bar	120
Maximum exhaust back pressure	bar	12
Accumulator charging pressure	bar	32
Calibration pressure of the maximum valve hydraulic system	bar	170
Hammer weight in working conditions	kG	680
Tool weight	kG	43
Pin retainer tool weight	kG	4
Delivery pipe diameter	G	¾"
Exhaust pipe diameter	G	¾"
Tool diameter	mm	95
Hammer height with tool without adapting plate	mm	1776
Maximum length of the tool inner guide	mm	363
Maximum diameter in front and back the tool bushings	mm	103
Maximum oil temperature in the tank	°C	80
Maximum absorbed power	kW	25,5

2.2.1 Tightening values:

COMPONENT DENOMINATION	Unit of measurement	VALUE
Accumulator screw	Kgm	65
Accumulator cover screw	Kgm	65



2.3 Environmental values for a correct functioning:

DENOMINATION	Units of Measurement	VALUE (between)
Temperature	°C	[-5 ; +45]
Humidity	%	[40 ; 90]

2.4 Overall dimensions

Dimension	Value mm
A	2031
B	1339
C	427
D	450
E	530

