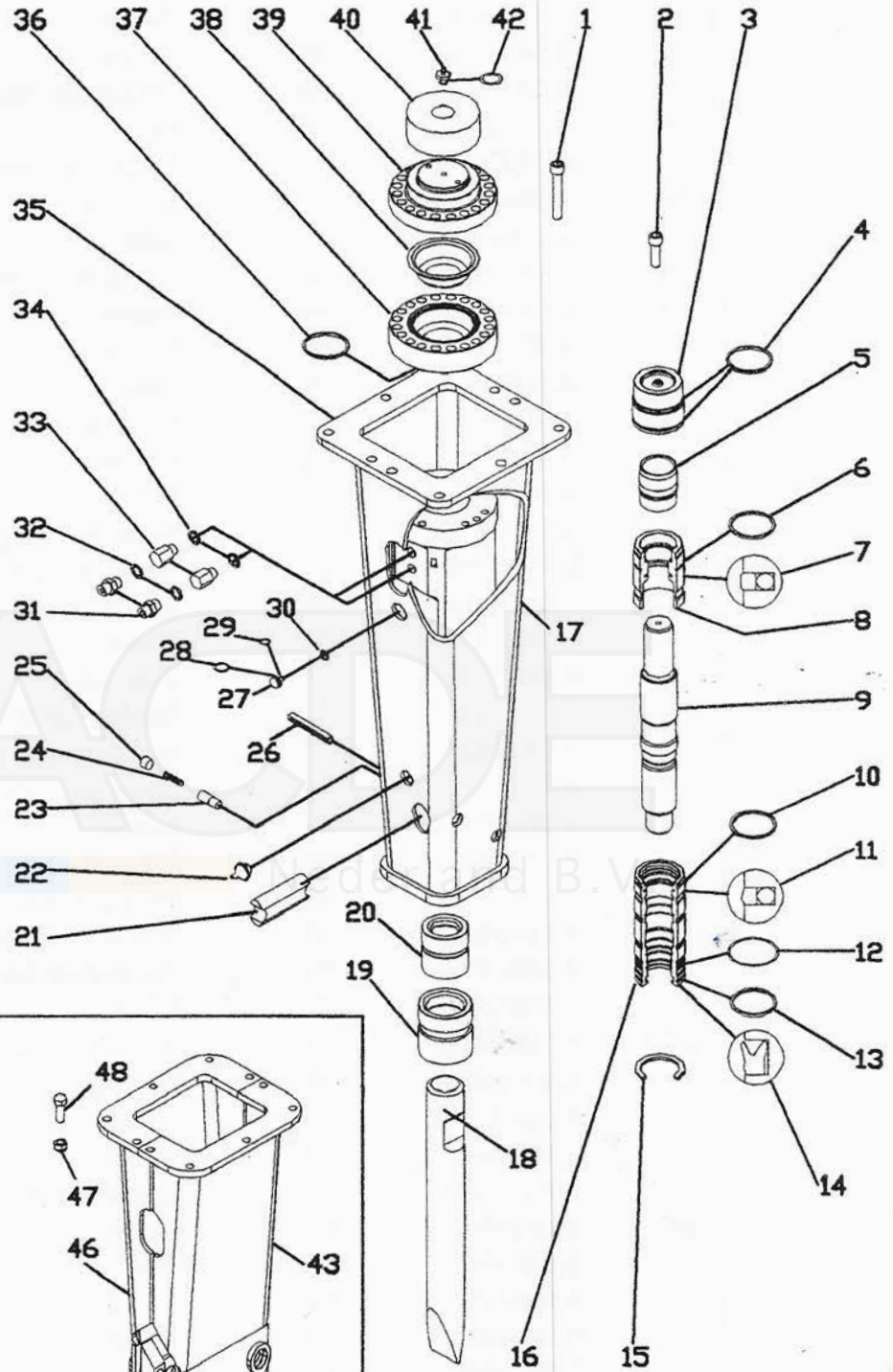
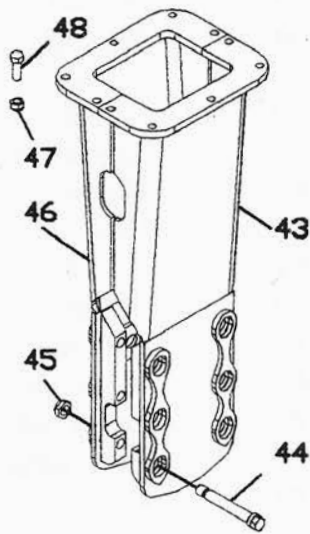




DMS 430



DM 430





SPARE PARTS DMS 430

Ref.	Code	Q.ty	Description
01	B.0454040	12	Screw
02	B.0454050	08	Screw
03	B.0433010	01	Distributor bush
04	A.00010352	02	O - ring
05	B.03330100	01	Distributor valve
06	A.00010352	01	O - ring
07	A.00010437	01	Seal
08	B.0432030	01	Upper body bush
09	B.0432041	01	Piston
10	A.00010352	01	O - ring
11	A.00010215	01	Seal
12	A.00010522	01	O - ring
13	A.00010352	01	O - ring
14	A.00010214	01	Seal
15	B.0432010	01	Body bush ring
16	B.0432020	01	Lower body bush
17	B.0431013	01	Spring
18	B.0451030	01	Chisel tool
	B.0451020	01	Moil tool
19	B.0451081	01	Support external bush
20	B.0431020	01	Support internal bush
21	B.0431030	01	Pin retainer tool
22	A.00440159	01	Greaser
23	B.0431040	01	Retainer pin
24	B.0201090	01	Spring retainer pin
25	A.00030538	01	Dowel <i>M24 X 1,5</i>
26	B.0201070	01	Pin retainer for bush
27	A.00053236	01	Valve
28	A.00010229	01	O - ring
30	A.00010228	01	Back up
31	A.00332122	02	Nipple
32	A.00010410	02	Washer
33	A.03330504	02	Special nipple
34	A.00010410	02	Washer
35	B.0435992	01	Case
36	A.00010352	01	O - ring
37	B.0434010	01	Accumulator basement
38	B.0454060	01	Diaphragm
39	B.0434020	01	Accumulator cover
40	B.0434030	01	Upper pad
41	A.00053464	01	Gas charging valve
42	A.00010366	01	O - ring



SPARE PARTS CASE DM 430

Ref.	Code	Q.ty	Description
43	B.0335621	01	Case right
44	B.0435080	06	Tie rod case
45	A.00330140	06	Nut
46	B.0435631	01	Case left
47	A.00330124	08	Nut
48	A.00030083	08	Screw

ACDE

Nederland B.V.



Technical features DM / DMS 430

Energy per stroke	J	1100
Maximum frequency	c/min.	500-900
Maximum oil flow	lt/min.	70-100
Maximum working pressure	bar	130
Calibration pressure of the max. valve hydraul. system ..	bar	170
Hammer weight in working condition	kG	430
Tool diameter	mm	95-85
Tool weight	kG	30
Pin retainer tool weight	kG	3
Hammer height with tool without plate	mm	1600
Delivery pipe diameter		3/4" G
Exhaust pipe diameter		3/4" G
Maximum oil temperature in the tank	°C	80
Maximum exhaust back pressure	bar	15
Accumulator charging pressure	bar	32
Maximum absorbed power	kW	21
Maximum lenght of the tool inner guide	mm	286
Maximum diameter in front and back the tool bushing...	mm	103
Tightening torques: accumulator cover screw	Kgm	25
Tightening torques: accumulator screw	Kgm	25



Environmental values

The machine works correctly within the following environmental values:

Temperature included between
-5° and +45°

Humidity included between
40% and 90%

Overall dimensions

A	1850
B	1175
C	458
D	356
E	392

