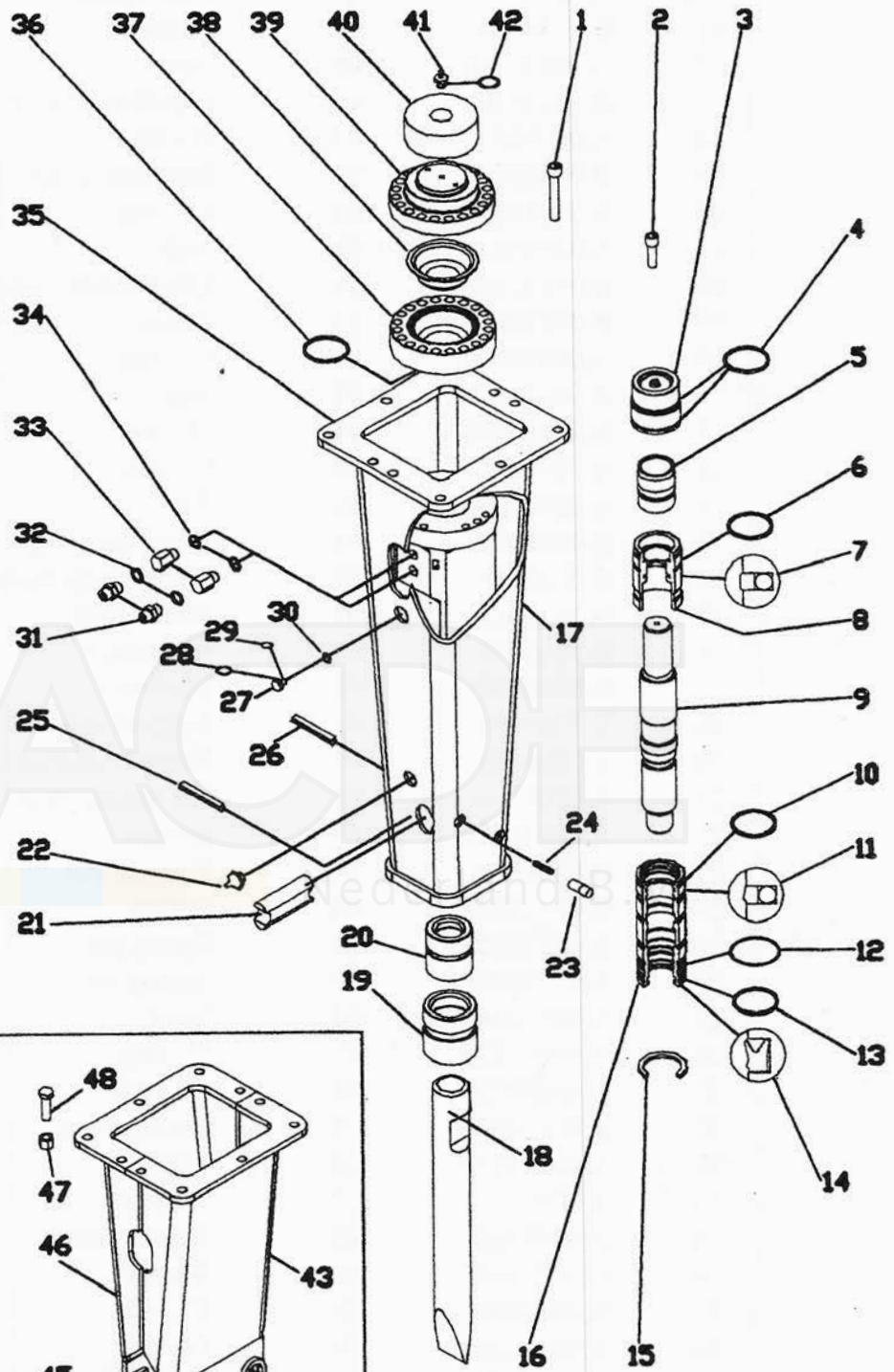
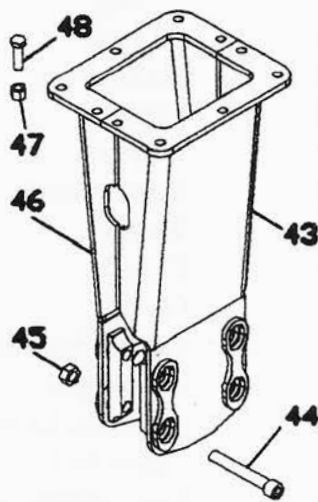




DMS 330



DM 330



**SPARE PARTS DMS 330**

Ref.	Code	Q.ty	Description
01	B.0334020	12	Screw
02	A.00030616	08	Screw
03	B.0433010	01	Distributor bush
04	A.00010352	02	O - ring
05	B.03330100	01	Distributor valve
06	A.00010352	01	O - ring
07	A.00010437	01	Seal
08	B.0432030	01	Upper body bush
09	B.0332020	01	Piston
10	A.00010352	01	O - ring
11	A.00010217	01	Seal
12	A.00010522	01	O - ring
13	A.00010352	01	O - ring
14	A.00010216	01	Seal
15	B.0432010	01	Body bush ring
16	B.0332011	01	Lower body bush
17	B.0331012	01	Monoblock
18	B.0261070	01	Chisel tool
	B.0261080	01	Moil tool
19	B.0261031	01	Support external bush
20	B.0261021	01	Support internal bush
21	B.0261060	01	Pin retainer tool
22	A.00440159	01	Greaser
23	B.0201120	01	Retainer pin
24	B.0201090	01	Spring
25	A.03330368	01	Spring pin
26	A.03330400	01	Spring pin
27	A.0053236	01	Valve
28	A.00010229	01	O - ring
29	A.00010227	01	O - ring
30	A.00010228	01	Backup ring
31	A.00332122	02	Nipple
32	A.00010410	02	Washer
33	A.00333504	02	Special nipple
34	A.00010410	02	Washer
35	B.0335991	01	Case
36	A.00010352	01	O - ring
37	B.0334010	01	Accumulator basement
38	B.0204021	01	Diaphragm
39	B.0264020	01	Accumulator cover
40	B.0334030	01	Upper pad
41	A.00053464	01	Gas charging valve
42	A.00010366	01	O - ring



SPARE PARTS CASE DM 330

Ref.	Code	Q.ty	Description
43	B.0335621	01	Case right
44	B.0265200	04	Tir rod case
45	A.00330140	04	Nut
46	B.0335631	01	Case left
47	A.00330124	08	Nut
48	A.00030083	08	Screw

ACDE

Nederland B.V.

**Dati Tecnici DM / DMS 330**

Energia per colpo.....	J	820
Frequenza massima	c/min.	1000
Portata olio max.	lt/min.	70-100
Pressione di lavoro max	bar	120
Pressione di taratura valvola di max impianto	bar	150
Peso martello in ordine di lavoro	kG	330
Diametro utensile.....	mm	73
Peso utensile	kG	18
Peso spinotto fermautensile.....	kG	1,4
Altezza martello con utensile senza piastra.....	mm	1420
Diametro tubo mandata olio		3/4" G
Diametro tubo scarico.....		3/4" G
Massima temperatura serbatoio	°C	80
Massima contropressione sullo scarico	bar	15
Pressione precarica accumulatore.....	bar	32
Potenza massima assorbita	kW	20
Lunghezza massima guida interna dell'utensile.....	mm	262
Diametro massimo davanti-dietro bussola guida utensile	mm	78
Norme di serraggio: Vite coperchio accumulatore	Kgm	25
Norme di serraggio: Vite accumulatore	Kgm	25



Environmental values

The machine works correctly within the following environmental values:

Temperature included between

-5° and +45°

Humidity included between

40% and 90%

Overall dimensions

A	1630
B	1060
C	360
D	356
E	392

