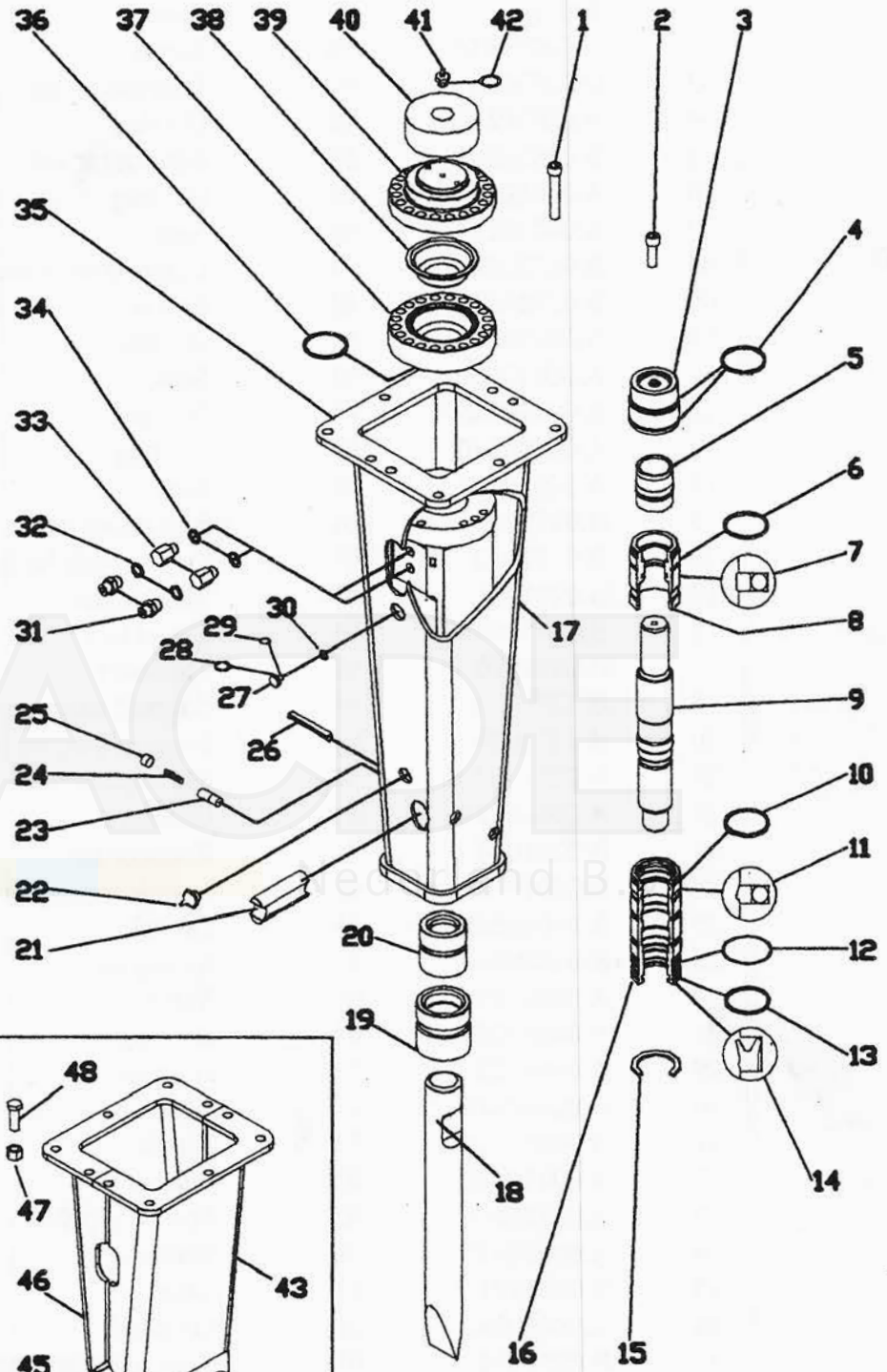
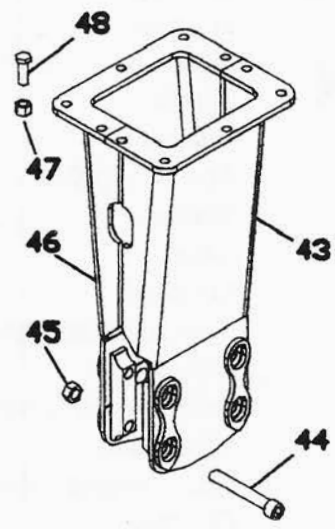




**DMS 270**



**DM 270**



**SPARE PARTS DMS 270**

Ref.	Code	Q.ty	Description
01	B.0334020	12	Screw
02	A.00030616	08	Screw
03	B.0273010	01	Distributor bush
04	A.00010540	02	O - ring
05	B.0233020	01	Distributor valve
06	A.00010540	01	O - ring
07	A.00010224	01	Seal
08	B.0272020	01	Upper body bush
09	B.0272030	01	Piston
10	A.00010540	01	O - ring
11	A.00010226	01	Seal
12	A.00010225	01	O - ring
13	A.00010540	01	O - ring
14	A.00010223	01	Seal
15	B.0272040	01	Body bush ring
16	B.0272010	01	Lower body bush
17	B.0271011	01	Monoblock
18	B.0271060	01	Chisel tool
	B.0271070	01	Moil tool
19	B.0271030	01	Support external bush
20	B.0271020	01	Support internal bush
21	B.0271050	01	Pin retainer tool
22	A.00440159	01	Greaser
23	B.0271040	01	Retainer pin
24	B.0201090	01	Spring retainer pin
25	A.00030629	01	Dowel
26	B.03330400	01	Spring pin
27	A.00053236	01	Valve
28	A.00010229	01	O - ring
29	A.00010227	01	O - ring
30	A.00010228	01	Back up
31	A.00332122	02	Nipple
32	A.00010410	02	Washer
33	A.03330504	02	Special nipple
34	A.00010410	02	Washer
35	B.0275991	01	Case
36	A.00010540	01	O - ring
37	B.0274010	01	Accumulator basement
38	B.0204021	01	Diaphragm
39	B.0264020	01	Accumulator cover
40	B.0334030	01	Upper pad
41	A.00053464	01	Gas charging valve
42	A.00010366	01	O - ring



**SPARE PARTS CASE DM 270**

Ref.	Code	Q.ty	Description
43	B.0275621	01	Case right
44	B.0275070	04	Tie rod case
45	A.00330140	04	Nut
46	B.0275631	01	Case left
47	A.00330124	08	Nut
48	A.00030083	08	Screw

ACDE

Nederland B.V.



## Technical features DM / DMS 270

Energy per stroke .....	J	680
Maximum frequency .....	c/min.	1000
Maximum oil flow .....	lt/min.	60-80
Maximum working pressure .....	bar	120
Calibration pressure of the max. valve hydraul. system ..	bar	150
Hammer weight in working condition .....	kG	270
Tool diameter .....	mm	68
Tool weight .....	kG	16
Pin retainer tool weight .....	kG	1,2
Hammer height with tool without plate .....	mm	1350
Delivery pipe diameter .....		1/2" G
Exhaust pipe diameter .....		1/2" G
Maximum oil temperature in the tank .....	°C	80
Maximum exhaust back pressure .....	bar	15
Accumulator charging pressure .....	bar	32
Maximum absorbed power .....	kW	20
Maximum lenght of the tool inner guide .....	mm	285
Maximum diameter in front and back the tool bushing...	mm	74
Tightening torques: accumulator cover screw .....	Kgm	25
Tightening torques: accumulator screw .....	Kgm	25



## Environmental values

The machine works correctly within the following environmental values:

Temperature included between  
-5° and +45°

Humidity included between  
40% and 90%

## Overall dimensions

A	1850
B	1175
C	458
D	356
E	392

