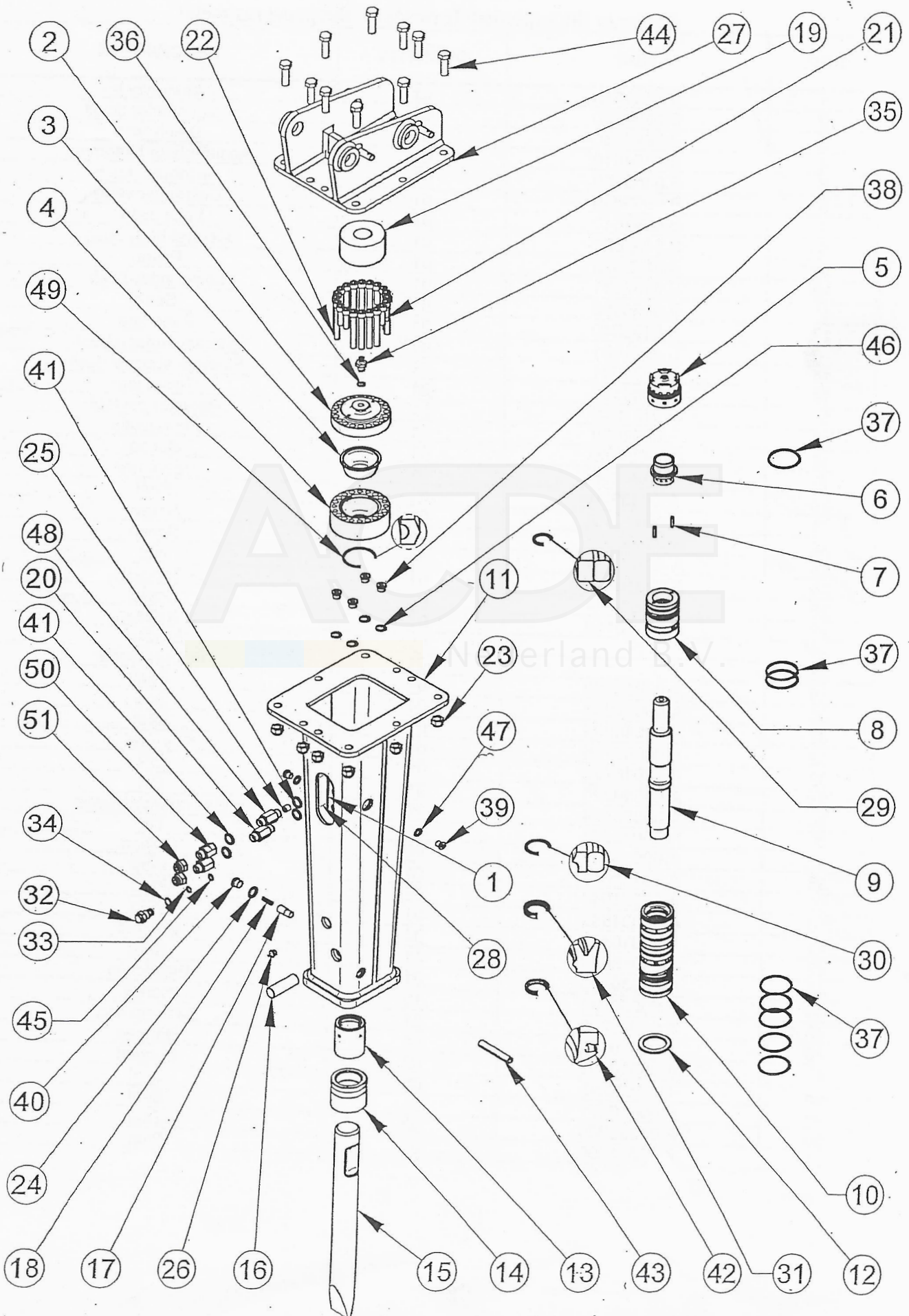




DMS 150





SPARE PARTS DMS 150

(Refer to the exploded drawing of the previous page)

REF.	CODE	QUANTITY	DESCRIPTION
1	B.0151010	01	Monoblock
2	B.0154020	01	Accumulator cover
3	B.0094030	01	Diaphragm
4	B.0154010	01	Accumulator basement
5	B.0153010	01	Distributor bush
6	B.0093030	01	Distributor valve
7	B.0093040	02	Little piston
8	B.0152031	01	Central body bush
9	B.0152020	01	Piston
10	B.0152011	01	Lower body bush
11	B.0155990	01	Case
12	B.0152040	01	Bush ring
13	B.8001051	01	Internal support bush
14	B.8001041	01	External support bush
15	B.8001130	01	Chisel tool
16	B.0151040	01	Retainer pin tool
17	B.0091030	01	Pin retainer
18	A.00030627	01	Spring
19	B.0164030	01	Upper pad
20	A.0033220	01	Seal
21	A.00030590	08	Screw
22	A.00030626	12	Screw
23	A.00330081	10	Nut
24	A.00010434	01	Bonded
25	B.0153020	01	Dowel
26	A.00440159	01	Greaser
27	-	01	Bracket
28	-	01	Polyurethane
29	A.00010623	01	Seal
30	A.00014298	01	Seal
31	A.00014299	01	Seal
32	A.00053236	01	Valve
33	A.00010227	01	OR
34	A.00010229	01	OR
35	A.00053464	01	Gas charging valve
36	A.00010366	01	OR
37	A.00014296	08	O-Ring
38	A.00331041	04	Plug
39	A.00331040	02	Plug
40	A.00331042	01	Plug
41	A.00010430	04	Bonded
42	A.00010620	01	Seal
43	A.03330400	01	Elastic pin
44	A.00030081	10	Screw
45	A.00010228	01	Back-up ring
46	A.00010431	04	Bonded
47	A.00010409	02	Bonded
48	B.0153030	01	Seal
49	A.00010371	01	Seal
50	A.00332200	02	Seal
51	A.00331200	02	Plug