

PARTS LIST

Vs22E

SECONDARY CRUSHER



SUPPLY PERIOD OF SPARE PARTS

Thank you for purchasing a Furukawa Rock Drill product.

Please note that the supply of spare parts will be assured for 10 years after the termination of production. Although the supply of spare parts is terminated in principle at the maturity of the subject supply period, we may be able to supply them upon request even after the expiration of the supply period on condition that the delivery date and price are subject to negotiation.

Even if it is within the supply period, however, the delivery date, price, etc. may be subject to negotiation when it is difficult to keep stocks should the purchased parts, such as electronic parts, etc., be not available because the manufacturer does not produce them any more.

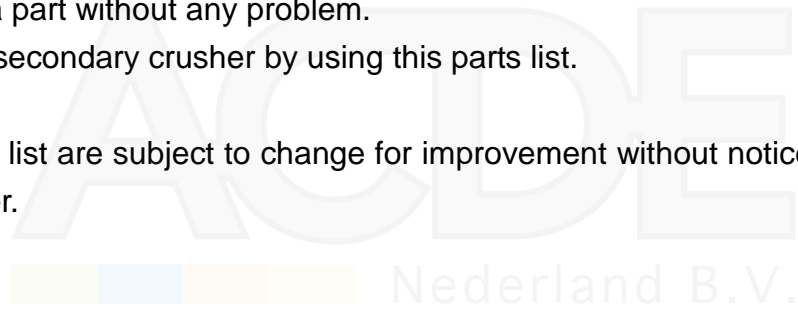
If you have any questions about any particular model subject to the warranty as stated above and the time limit of spare parts supply, please contact your nearest FRD Europe B.V. distributor.



USING THE PARTS LIST

1. This parts list describes the components of a secondary crusher.
2. When ordering a part, refer to the illustrations and lists in this parts list and then inform the FRD Europe B.V. distributor in your area of the following items.
 - (1) Model name
 - (2) Serial No.
 - (3) Part No.
 - (4) Part name
 - (5) Quantity
3. Use "Genuine Furukawa Rock Drill Parts" when replacing all parts.
4. The illustrations in this parts list show the positions and shapes of the parts so that a user can order a part without any problem.

Do not repair a secondary crusher by using this parts list.
5. The parts in this list are subject to change for improvement without notice on the part of the manufacturer.

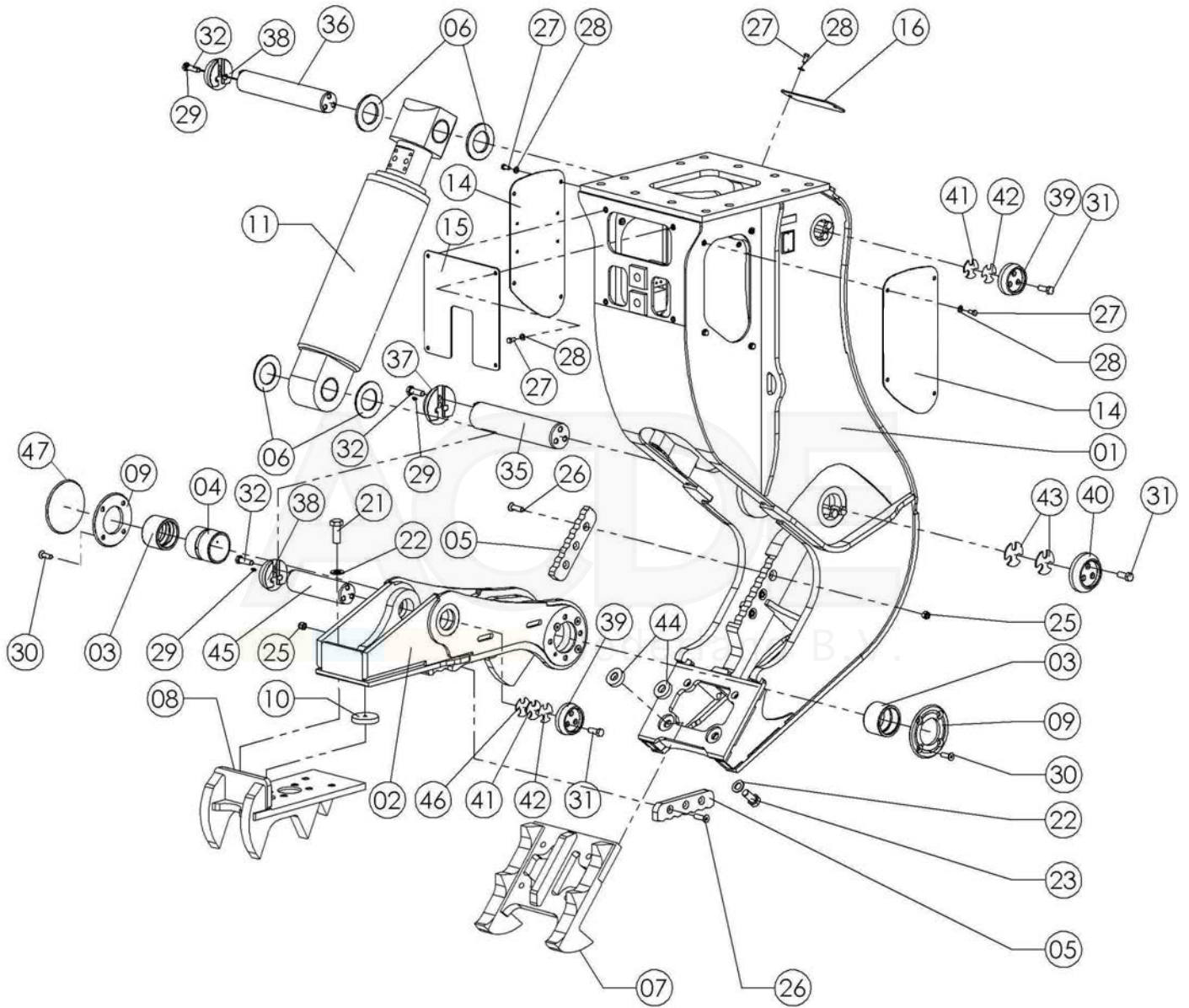


CONTENTS.

GROUP NAME	PAGE
CRUSHER ASSEMBLY.....	01-01
HYDRAULIC CYLINDER	02-01
HYDRAULIC SYSTEM.....	03-01



CRUSHER ASSEMBLY



CRUSHER ASSEMBLY

ITEM	PART NO.	PART NAME	Q'TY	REMARKS
01	VS22E-02071	FRAME	1	
02	VS22E-02039	ACTIVE FRAME	1	
03	VS22E-02032	BUSHING	2	
04	VS22E-02501	SPACER	1	
05	VS30E-02024	CUTTER BLADE	2	
06	VS22E-02502	THRUST WASHER	4	
07	VS30E-02035	REPLACEABLE TOOTH ASSY. - LOWER	1	
08	VS30E-02037	REPLACEABLE TOOTH ASSY. – UPPER	1	
09	VS22E-02503	RETAINING PLATE – BUSHING	2	
10	VS30E-02504	WASHER	2	
11	VS22E-91001	HYDRAULIC CYLINDER ASSEMBLY	1	SEE PAGE 02-01
14	VS30E-02022	PROTECTION COVER	2	
15	VS30E-02505	PROTECTION COVER	1	
16	VS30E-02021	PROTECTION COVER	1	
21	101032-27080	HEXAGON BOLT	6	M27 X 80 10.9
22	145012-27000	SPRING WASHER	10	M27
23	101032-27060	HEXAGON BOLT	4	M27 X 60 10.9
25	VS30E-02506	SELF LOCKING NUT	6	M16
26	VS30E-02507	COUNTERSUNK SCREW	6	M16 X 60 10.9
27	101022-12025	HEXAGON BOLT	14	M12 X 25
28	145012-12000	SPRING WASHER	14	M12
29	VS30E-02508	GREASE NIPPLE	3	
30	VS30E-02509	COUNTERSUNK SCREW	8	M16 X 50 10.9
31	101032-20050	HEXAGON BOLT	9	M20 X 50 10.9
32	101032-20060	HEXAGON BOLT	9	M20 X 60 10.9
35	VS22E-02014	CENTRE PIN	1	
36	VS22E-02510	CYLINDER PIN - UPPER	1	
37	VM32ER-02515	COVER	1	
38	VS30E-02512	COVER	2	
39	VS30E-02018	COVER	2	
40	VM32ER-02514	COVER	1	
41	VS30E-02517	SHIM	2	
42	VS30E-02515	SHIM	2	
43	VM32ER-02517	SHIM	2	
44	VS30E-02514	SPACER	4	
45	VS22E-02017	CYLINDER PIN - LOWER	1	
46	VS30E-02518	SHIM	1	

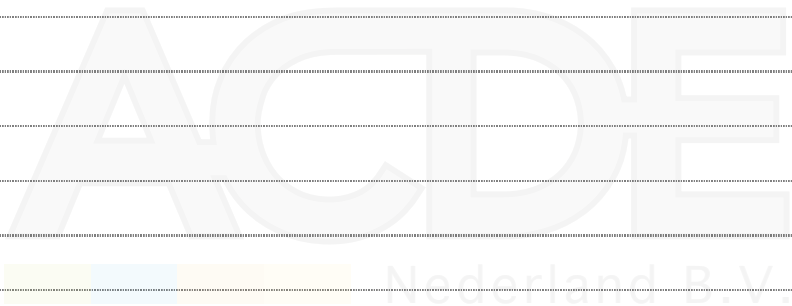
CRUSHER ASSEMBLY

ITEM	PART NO.	PART NAME	Q'TY	REMARKS
47	VS22E-02504	O-RING	2	

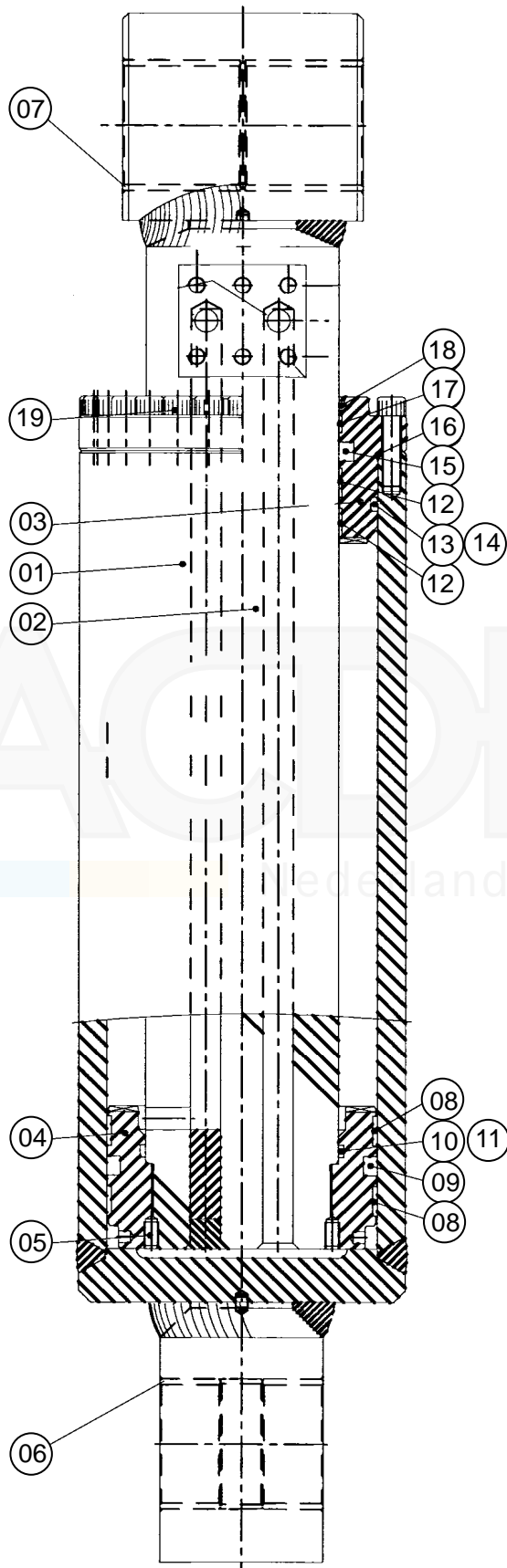


SERVICE MEMO

Horizontal dotted lines for writing.



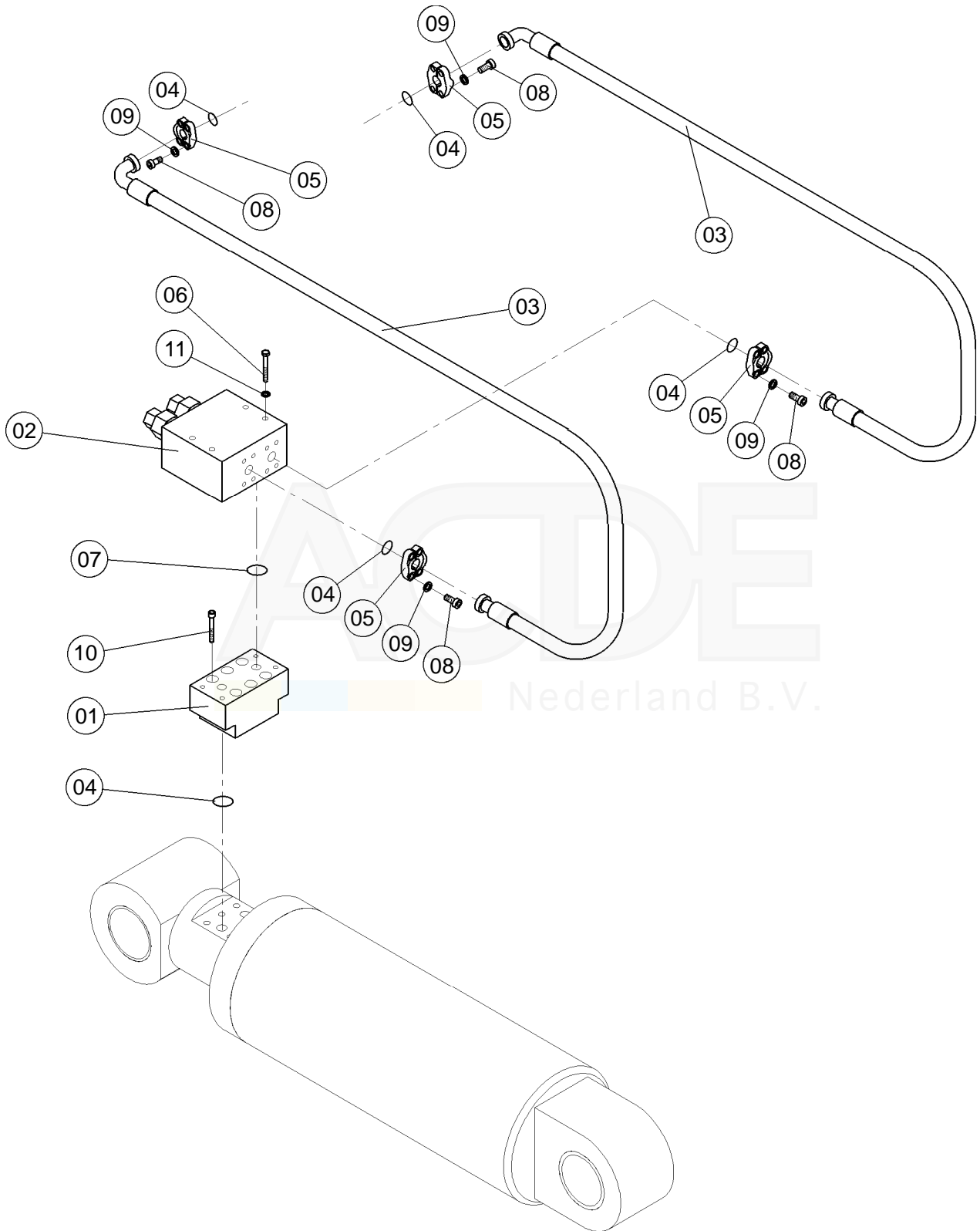
HYDRAULIC CYLINDER



HYDRAULIC CYLINDER

ITEM	PART NO.	PART NAME	Q'TY	REMARKS
	VS22E-91001	HYDRAULIC CYLINDER ASSEMBLY	1	(ITEMS 1 - 19)
01	VS22E-01030	CYLINDER TUBE	1	
02	VS22E-01032	PISTON ROD	1	
03	VS22E-01005	PISTON HEAD	1	
04	VS22E-01501	PISTON	1	
05	VS22E-01502	SET SCREW	2	
06	VS22E-01503	BUSHING	2	
07	VS22E-01504	BUSHING	2	
08	VS22E-01513	GUIDE RING	2	
09	VS22E-01012	PISTON SEAL	1	
10	VS22E-01014	PISTON SEAL	1	
11	VS22E-01505	PISTON SEAL	2	
12	VS22E-01506	GUIDE	2	
13	VS22E-01013	SEAL	1	
14	VS22E-01507	SEAL	1	
15	VS22E-01508	ROD SEAL	1	
16	VS22E-01509	SEAL	1	
17	VS22E-01510	GUIDE	1	
18	VS22E-01511	SCRAPER RING	1	
19	VS22E-01512	HEXAGON SOCKET BOLT	28	
	VS22E-91011	SEAL KIT	1	(ITEMS 8 - 18)

HYDRAULIC SYSTEM



HYDRAULIC SYSTEM

ITEM	PART NO.	PART NAME	Q'TY	REMARKS
01	VR26ER-03501	DISTRIBUTION BLOCK	1	
02	VM19ER--94017	ACCELERATION VALVE	1	
03	VM19ER-03502	HOSE ASSEMBLY	2	
04	VM32ER-03508	O-RING	6	
05	VM19ER-03505	SPLIT FLANGE	4	
06	VM19ER-03517	HEXAGON SOCKET BOLT	4	
07	VM19ER-03519	O-RING	2	
08	VM19ER-03507	HEXAGON SOCKET BOLT	16	
09	VM19ER-03506	SPRING WASHER	16	
10	VM19ER-03518	HEXAGON SOCKET BOLT	6	
11	145012-10000	SPRING WASHER	4	

ACDE
Nederland B.V.



FRD **FURUKAWA ROCK DRILL EUROPE B.V.**
FURUKAWA

Proostwetering 29
3543 AB Utrecht, The Netherlands
Tel.: +31-(0)30-2475160 Fax: +31-(0)30-2412305

Book No. : Vs22E-K101E
Date of Issue : August 2013