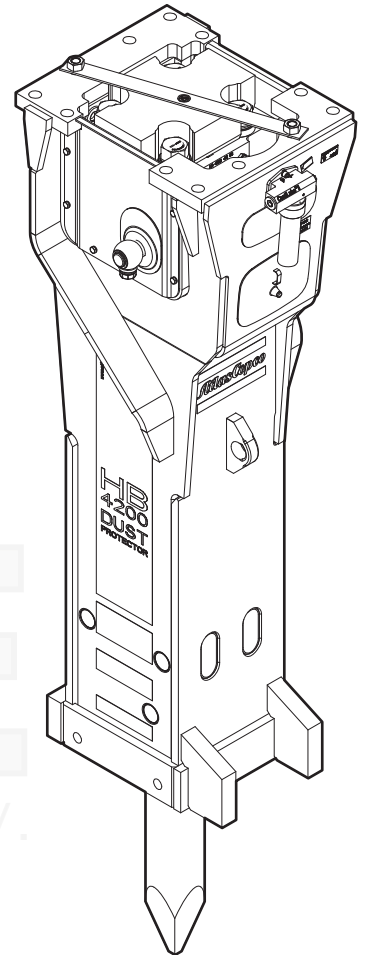


Spare parts list Hydraulic breaker



ACDE
Nederland B.V.

Contents

General note.....	5
Spare parts list.....	6
Hydraulic breaker HB 4200.....	6
Hydraulic breaker HB 4200 DustProtector.....	8
Percussion unit part 1: cylinder cover.....	10
Percussion unit part 2: cylinder.....	12
Percussion unit part 3: lower breaker part.....	14
Connecting kit for ContiLube® II.....	16
StartSelect - AutoStart or AutoStop.....	18
Optional parts.....	20
Working Tools.....	21
HB 4200.....	21
HB 4200 DustProtector.....	22
Accessories.....	23
Hydraulic hoses.....	23
Optional equipment.....	23
Kits.....	24
Label kit HB 4200.....	24
Label kit HB 4200 DustProtector.....	25
Seal kit.....	26
Seal kit for swivel joint (ContiLube® II).....	26
Plastic parts kit.....	26
Tensioning bolt kit.....	27
DustProtector kit.....	27
Noise protection kit.....	27
Lower breaker part kit (bronze).....	27
Lower breaker part kit (steel).....	28
Lower breaker part kit DustProtector (bronze).....	28
Lower breaker part kit DustProtector (steel).....	29
Expansion bolt kit.....	29
Accumulator repair kit.....	29
Dimensions.....	30
Dimensions HB 4200.....	30
Dimensions HB 4200 DustProtector.....	31

General note

This spare parts list applies to the following hydraulic tools:

Part number	Description
3363 0901 49	Hydraulic breaker HB 4200
3363 0901 81	Hydraulic breaker HB 4200 DustProtector

Use only authorized parts. Any damage or malfunction caused by the use of unauthorized parts is not covered by Warranty or Product Liability. Any unauthorized use or copying of the contents or any part thereof is prohibited. This applies in particular to trademarks, model denominations, part numbers and drawings.

Instructions for use

This spare parts list contains no safety regulations and is merely intended to assist in the ordering of spare parts.

For information on operating, servicing or repairing the hydraulic tool, the relevant operating manual must be consulted at all costs.

Please observe the safety regulations listed in the relevant operating manual!

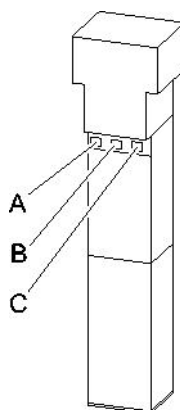
Instructions of ordering

It is essential to indicate the serial number of the hydraulic tool when ordering spare parts!

Please note the full identification number of your hydraulic tool. This code can be found on the cylinder.

Determine the quantity of individual parts which are required and need to be ordered. The order must indicate the following details:

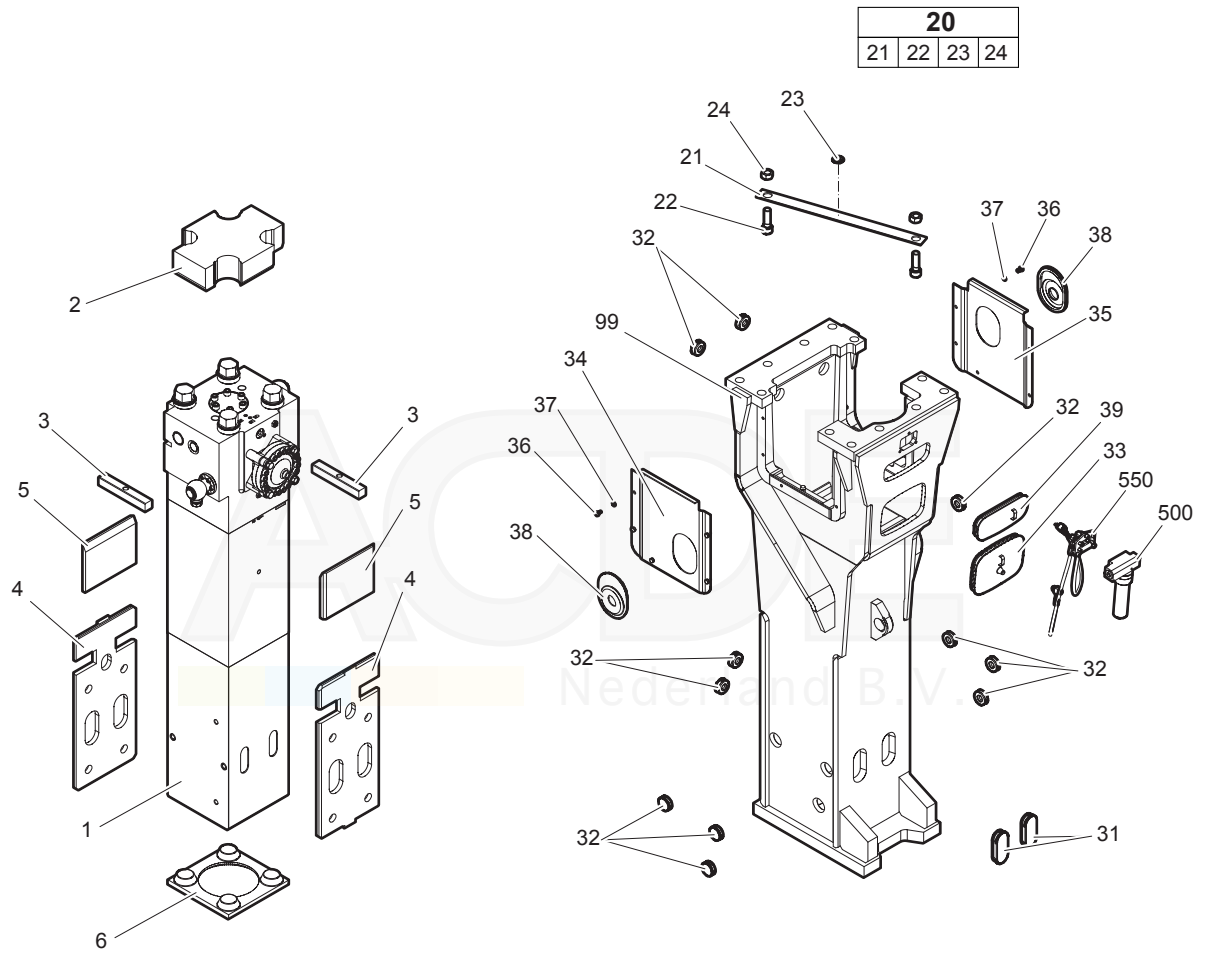
- full identification code of the hydraulic tool
- required quantity
- part number
- description



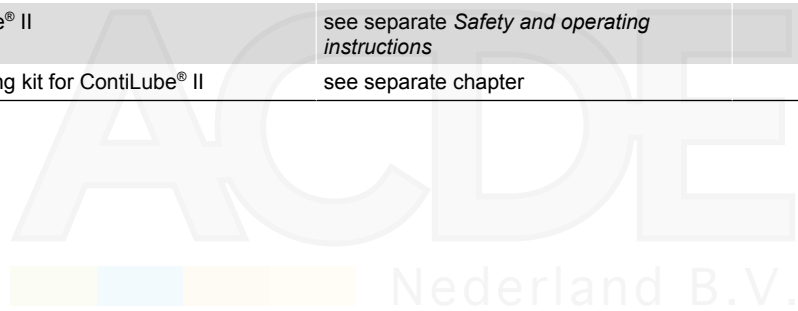
- A. Cylinder number
- B. Type
- C. Serial number

Spare parts list

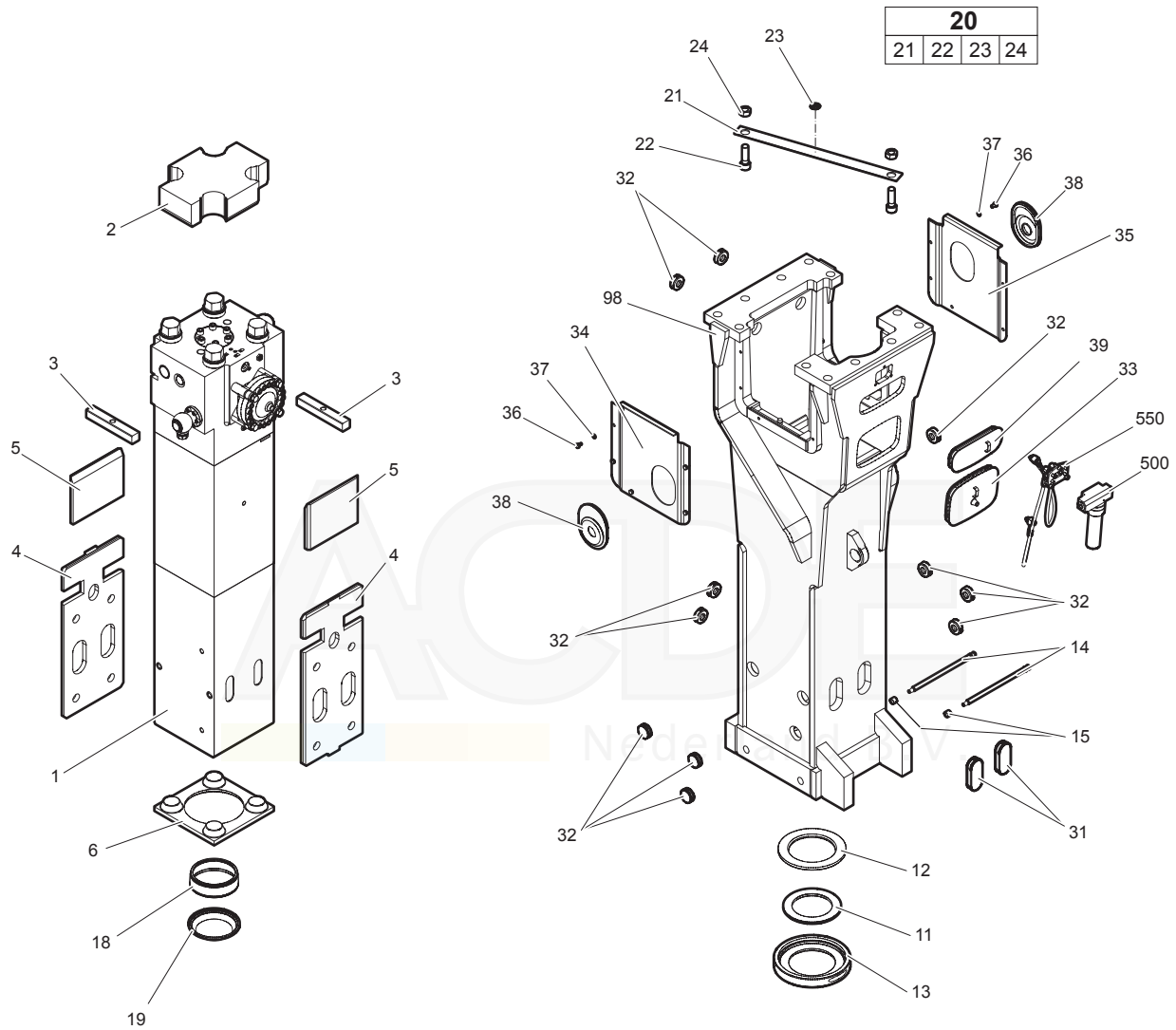
Hydraulic breaker HB 4200



No.	Description	Remark	Quantity	Part number
1	Percussion unit	see separate chapter	1	3363 0901 51
2	Elastic pad		1	3361 3567 89
3	Shock absorber		2	3361 3569 25
4	Guide plate		2	3362 2698 03
5	Guide plate		2	3362 2652 15
6	Plate		1	3363 0862 37
20(21-24)	Transport safety device complete		1	3363 0834 64
21	Transport safety device		1	-
22	Allen screw		2	3360 1141 51
23	Label transport safety device		1	3363 0918 72
24	Nut		2	3360 1032 55
31	Plug		2	3363 0860 13
32	Plug		11	3363 0860 17
33	Plate		1	3363 0311 83
34	Plate		1	3363 0843 33
35	Plate		1	3363 0844 29
36	Allen screw		10	3360 4333 81
37	Pair of lock washers		10	3361 8505 96
38	Cover		2	3363 0311 81
39	Plate		1	3363 0680 99
99	Breaker box		1	3363 0981 42
500	ContiLube® II	see separate <i>Safety and operating instructions</i>	1	3363 0671 23
550	Connecting kit for ContiLube® II	see separate chapter	1	3363 0834 69

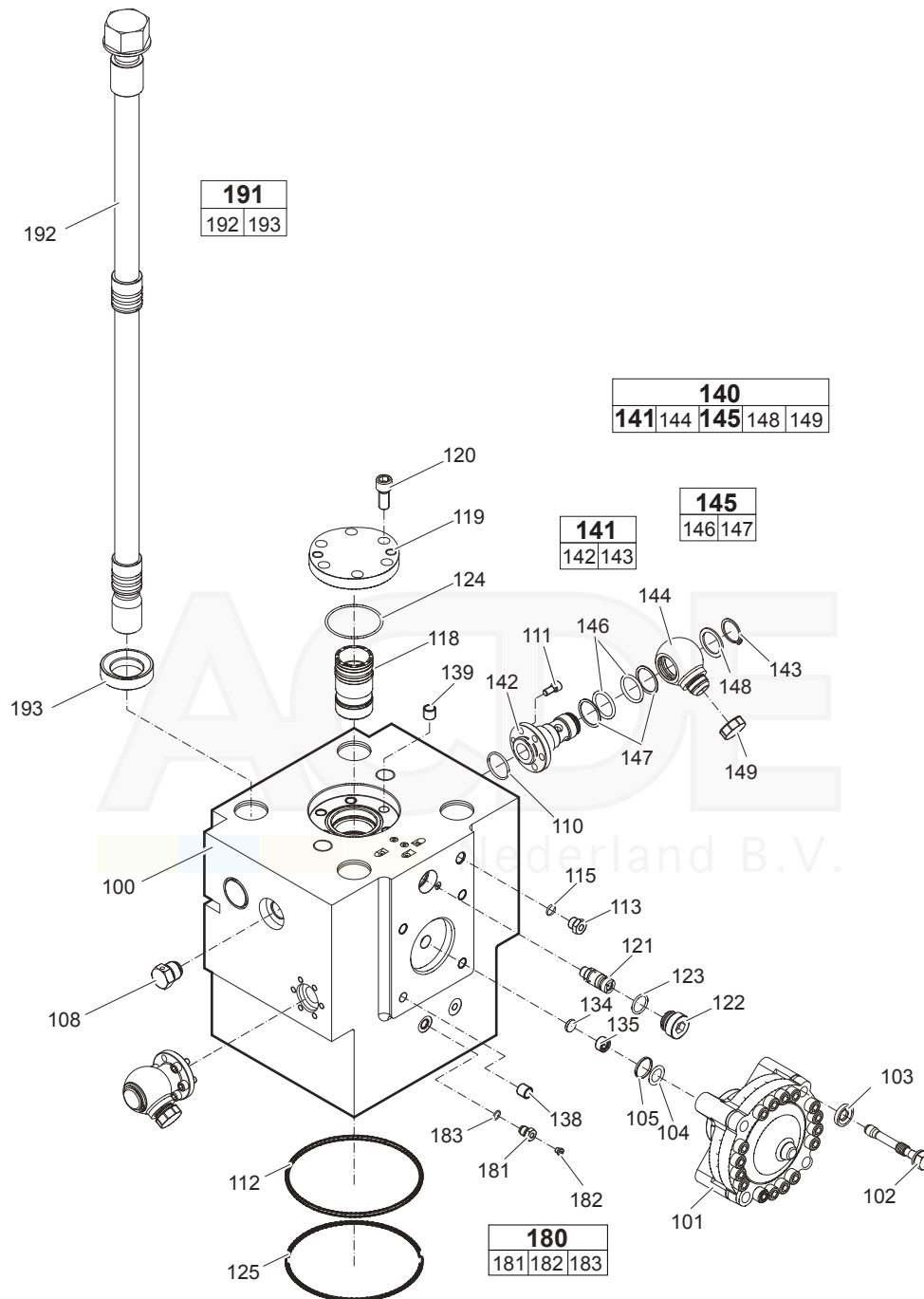


Hydraulic breaker HB 4200 DustProtector



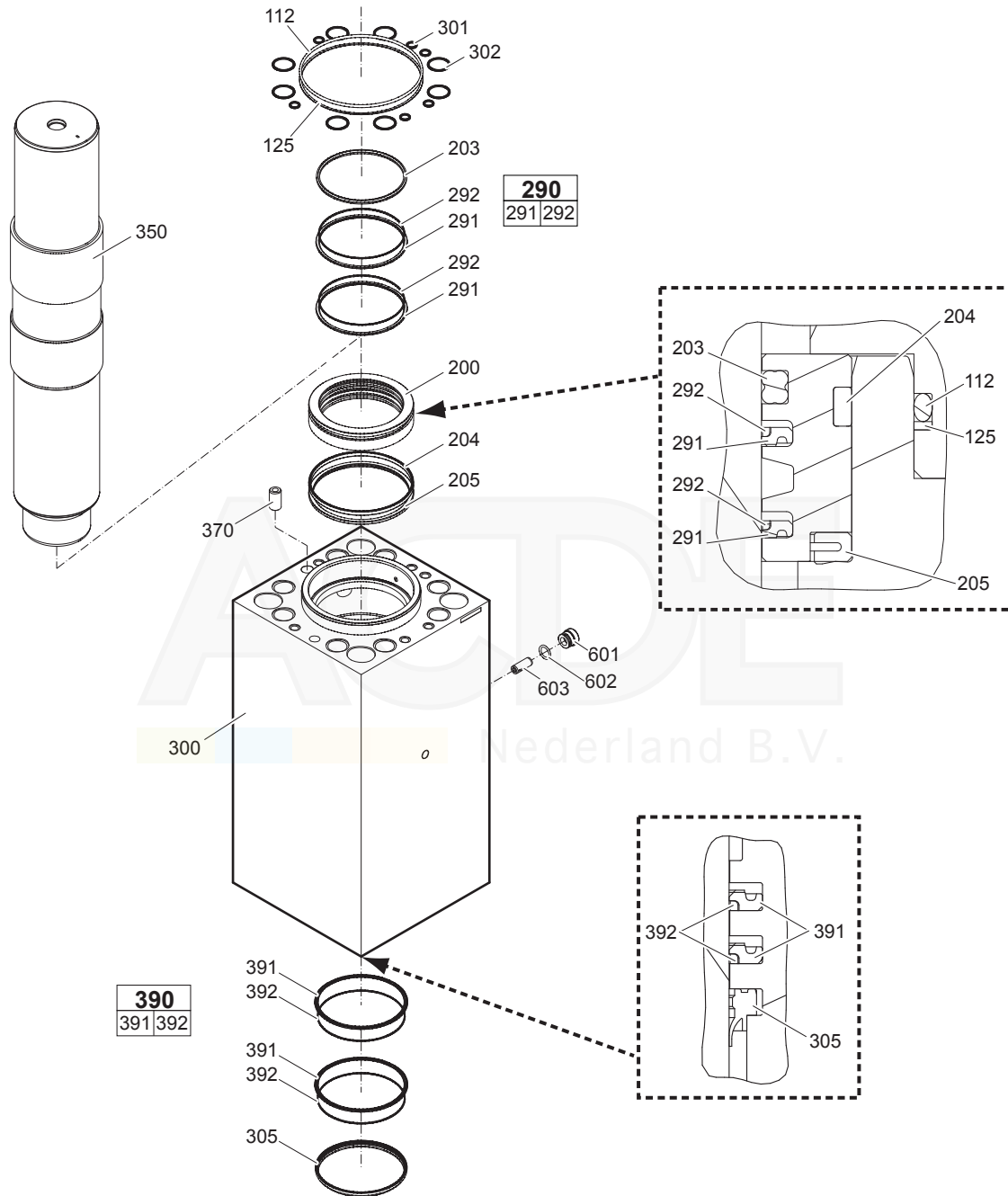
No.	Description	Remark	Quantity	Part number
1	Percussion unit	see separate chapter Note: When ordering a percussion unit for DustProtector version it is imperative to order additionally the base for wiper (no. 18) and the wiper (no. 19).	1	3363 0901 51
2	Elastic pad		1	3361 3567 89
3	Shock absorber		2	3361 3569 25
4	Guide plate		2	3362 2698 03
5	Guide plate		2	3362 2652 15
6	Plate		1	3363 0862 37
11	Floating ring	tribolid steel see chapter <i>Optional parts</i>	1	3363 0706 65
12	Counter ring		1	3363 0338 01
13	Guide ring		1	3363 0337 33
14	Bolt		2	3363 0706 44
15	Locking bush		2	3361 8543 63
18	Base for wiper		1	3363 0886 51
19	Wiper		1	3363 0342 65
20(21-24)	Transport safety device complete		1	3363 0834 64
21	Transport safety device		1	-
22	Allen screw		2	3360 1141 51
23	Label transport safety device		1	3363 0918 72
24	Nut		2	3360 1032 55
31	Plug		2	3363 0860 13
32	Plug		11	3363 0860 17
33	Plate		1	3363 0311 83
34	Plate		1	3363 0843 33
35	Plate		1	3363 0844 29
36	Allen screw		10	3360 4333 81
37	Pair of lock washers		10	3361 8505 96
38	Plate		2	3363 0311 81
39	Plate		1	3363 0680 99
98	Breaker box		1	3363 0981 43
500	ContiLube® II	see separate <i>Safety and operating instructions</i>	1	3363 0671 23
550	Connecting kit for ContiLube® II	see separate chapter	1	3363 0834 69

Percussion unit part 1: cylinder cover



No.	Description	Remark	Quantity	Part number
100	Cylinder cover	with no. 134 - 139	1	3363 0834 76
101	HP-accumulator		1	3363 0695 87
102	Expansion bolt		4	3361 8515 91
103	Washer		4	3363 0922 53
104	O-ring		1	3360 3143 64
105	Back-up ring		1	3360 3280 46
108	Pressure relief valve		1	3361 8545 11
110	O-ring		2	3360 3143 73
111	Allen screw		12	3360 1037 50
112	O-ring		1	3361 0318 10
113	Connecting screw		1	3361 8546 57
115	O-ring		1	3360 4781 71
118	Main control valve		1	3363 0885 69
119	Cover		1	3361 3315 55
120	Allen screw		6	3360 1037 76
121	Valve		1	3363 0354 53
122	Threaded plug		1	3363 0354 25
123	O-ring		1	3360 3143 70
124	O-ring		1	3360 3143 75
125	Back-up ring		1	3363 0874 83
134	Strainer disk		1	3361 8441 13
135	Threaded plug		1	3361 8441 15
138	Threaded insert		4	3363 0899 16
139	Threaded insert		6	3361 0315 29
140(141-149)	Swivel joint complete		2	3362 2699 99
141(142-143)	Adapter complete		1	3363 1034 71
142	Adapter		1	-
143	Snapping		1	3363 1031 33
144	Adapter		1	3361 3566 43
145(146-147)	Seal kit		1	3361 8504 22
146	O-ring		2	-
147	Back-up ring		2	-
148	Disk		1	3361 3566 45
149	Cap		1	3361 3534 89
180(181-183)	Filling valve complete		1	3363 0872 86
181	Filling valve		1	-
182	Threaded plug		1	3360 4784 26
183	O-ring		1	3360 1751 25
191(192-193)	Tensioning bolt complete		4	3363 0855 00
192	Tensioning bolt		1	3363 0846 21
193	Washer		1	3363 0936 53

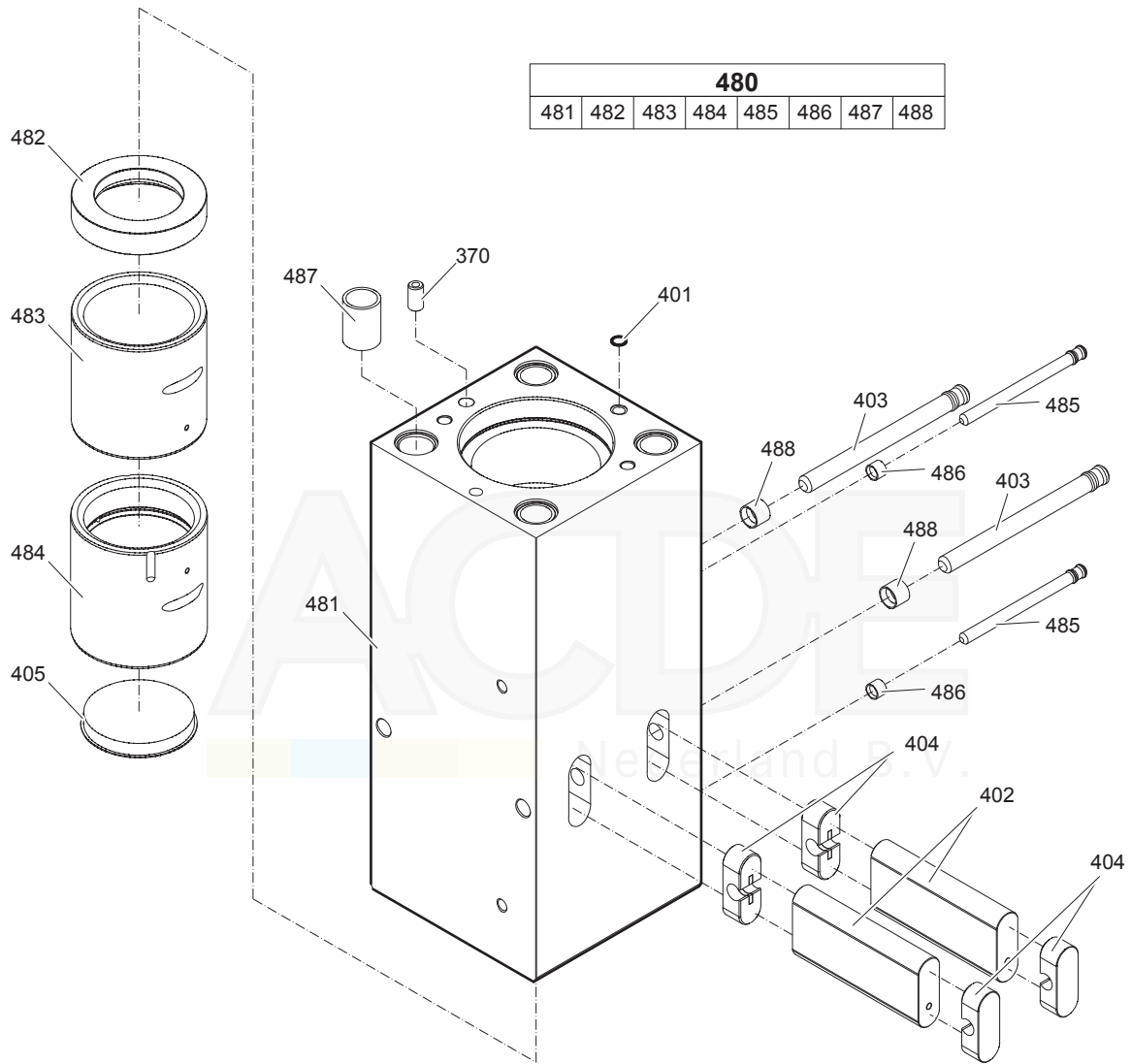
Percussion unit part 2: cylinder



No.	Description	Remark	Quantity	Part number
200	Seal bush		1	3363 0855 98
203	Seal		1	3361 8462 77
204	Seal		1	3363 0981 38
205	Ring		1	3363 0857 69
290(291-292)	Seal kit		2	3363 0835 93
291	Seal		1	-
292	Back-up ring		1	-
300	Cylinder	with no. 601 - 603	1	3363 0834 77
301	Seal		6	3362 2675 85
302	Seal		8	3362 2675 89
305	Wiper		1	3363 0836 71
350	Percussion piston		1	3361 3566 13
370	Lock pin		1	3360 9214 13
390(391-392)	Seal kit		2	3363 0835 94
391	Seal		1	-
392	Back-up ring		1	-
601	Plug		1	3363 0825 93
602	O-ring		1	3363 0832 45
603	Valve piston		1	3363 0825 05



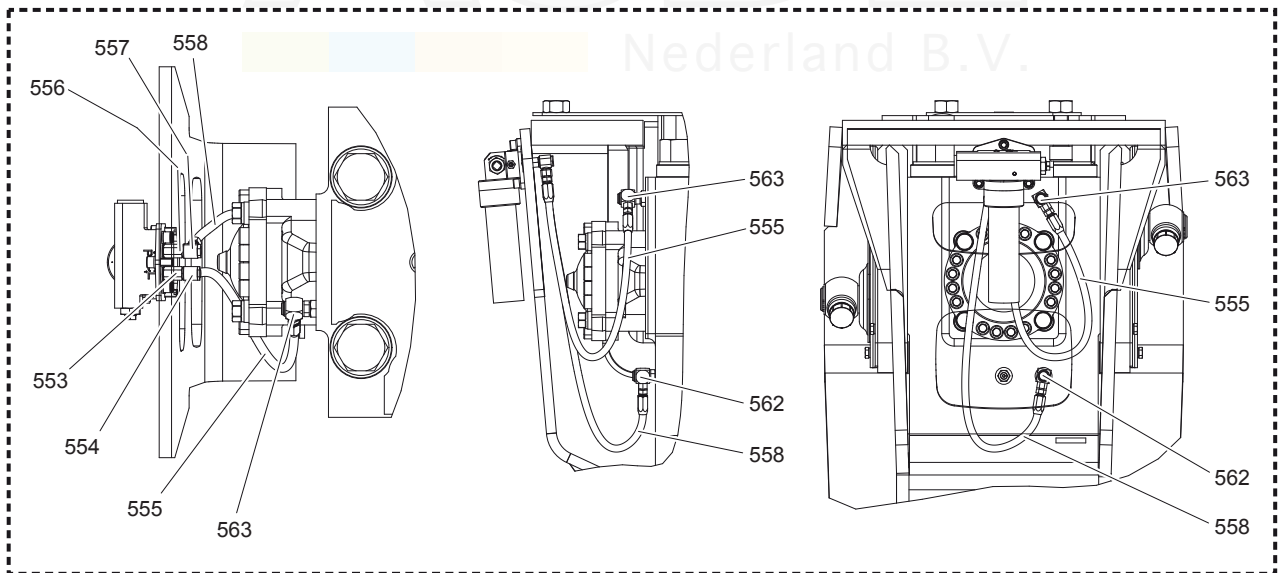
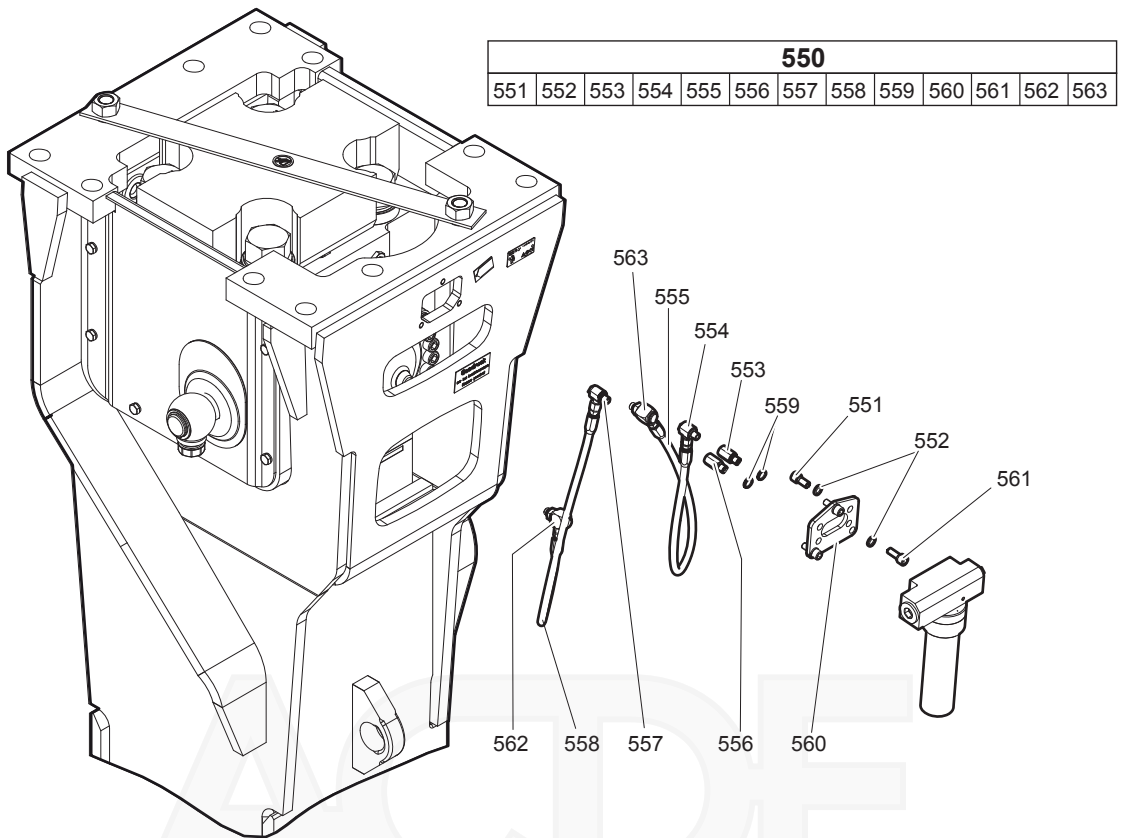
Percussion unit part 3: lower breaker part



No.	Description	Remark	Quantity	Part number
370	Lock pin		1	3360 9214 13
401	Seal		1	3362 2675 86
402	Retainer bar		2	3361 3315 29
403	Bolt		2	3362 2615 40
404	Plug		4	3362 2629 21
405	Protective cap		1	3361 3297 94
480(481-488)	Lower breaker part complete	Note: When ordering a lower breaker part for DustProtector version it is imperative to order additionally the base for wiper (no. 18) and the wiper (no. 19).	1	3363 0894 80
481	Lower breaker part		1	-
482	Buffer ring		1	3363 0690 83
483	Wear bush		1	3363 0691 37
484	Wear bush	bronze steel see chapter <i>Optional parts</i>	1	3363 0885 11
485	Bolt		2	3361 8543 47
486	Locking bush		2	3361 8543 63
487	Threaded insert		4	3363 0853 21
488	Locking bush		2	3362 2604 33



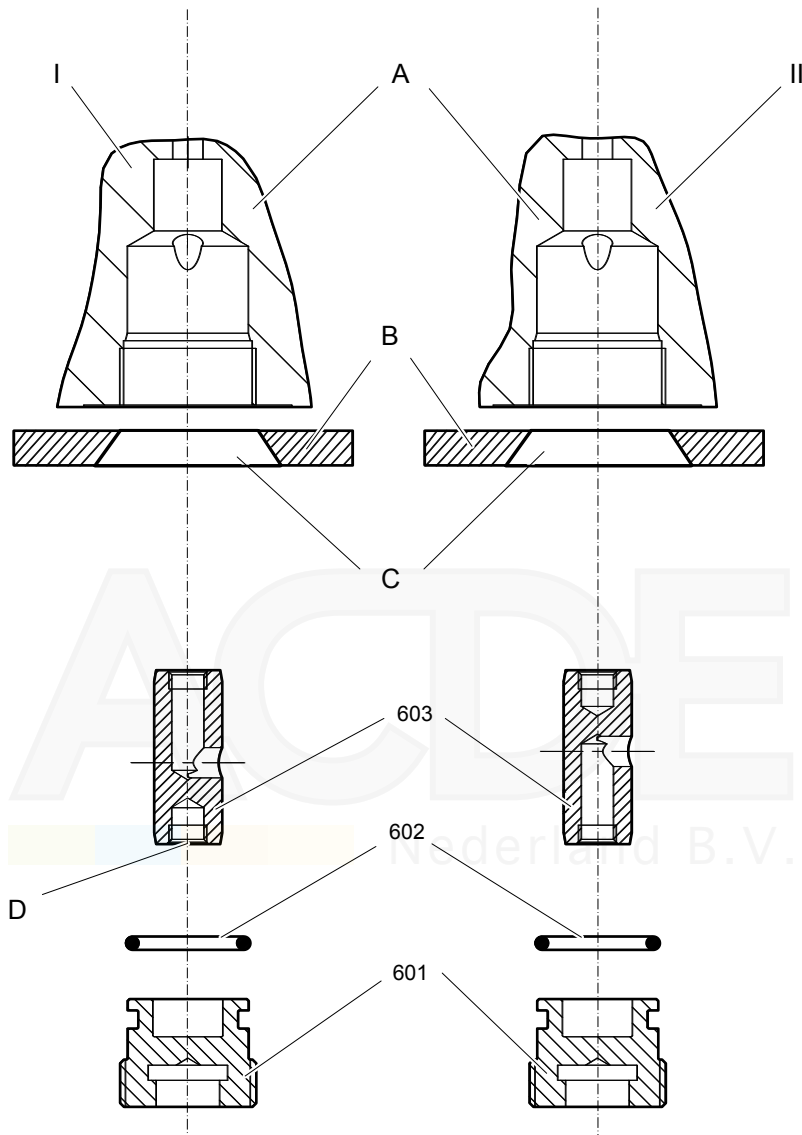
Connecting kit for ContiLube® II



No.	Description	Remark	Quantity	Part number
550(551-563)	Connecting kit		1	3363 0834 69
551	Allen screw	secure with Loctite 243	4	3360 1037 50
552	Pair of lock washers		7	3361 8505 96
553	Adapter	secure with Loctite 243	1	3363 0668 87
554	Fitting	secure with Loctite 243	1	3363 0662 33
555	Hydraulic hose	Grease line secure with Loctite 243 Route the hydraulic hoses as shown on the drawing. It must be ensured that the hydraulic hoses can move freely and are not in contact at any point.	1	3363 0838 73
556	Adapter	secure with Loctite 243	1	3363 0687 45
557	Fitting	secure with Loctite 243	1	3363 0662 34
558	Hydraulic hose	Oil line secure with Loctite 243 Route the hydraulic hoses as shown on the drawing. It must be ensured that the hydraulic hoses can move freely and are not in contact at any point.	1	3363 0838 77
559	Seal		2	3363 0669 51
560	Support		1	3363 0689 37
561	Allen screw		3	3360 1037 51
562	Fitting	secure with Loctite 243	1	3363 0871 85
563	Fitting	secure with Loctite 243	1	3363 0871 86



StartSelect - AutoStart or AutoStop



No.	Description	Remark	Quantity	Part number
601	Plug		1	3363 0825 93
602	O-ring		1	3363 0832 45
603	Valve piston		1	3363 0825 05

I = AutoStop setting

II = AutoStart setting (standard setting on delivery)

- A. Port bore in cylinder
- B. Wall of breaker box
- C. Plug of breaker box
- D. M 10 thread (both ends) for mounting

The position of the StartSelect unit is shown on the percussion unit illustrations.

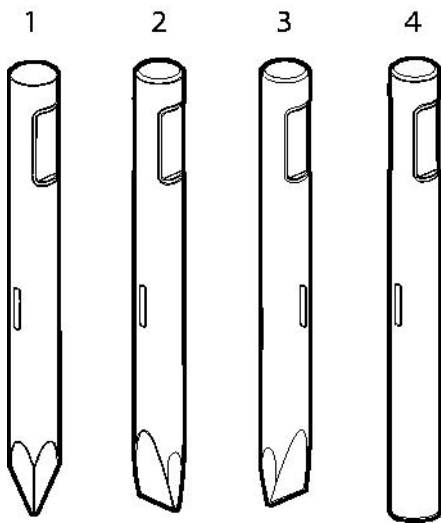


Optional parts

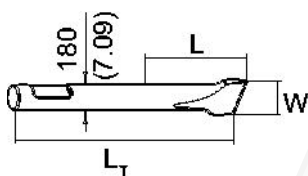
No.	Description	Remark	Quantity	Part number
11	Floating ring	steel	1	3363 0338 03
484	Wear bush	steel	1	3363 0886 53



Working Tools



HB 4200



Metric

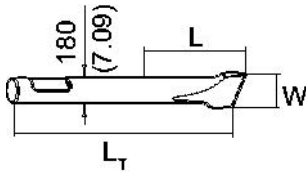
No.	Description	Remark	W (mm)	L (mm)	L _T (mm)	Wt (kg)	Part number
1	Moil point	ClassicLine		620	1400	240.0	3363 0871 53
1	Moil point	ClassicLine		820	1600	280.0	3363 0822 59
1	Moil point	SilverLine		820	1600	280.0	3363 0944 53
2	Chisel (cross)	ClassicLine	180	620	1400	250.0	3363 0859 79
2	Chisel (cross)	ClassicLine	180	820	1600	290.0	3363 0822 61
2	Chisel (cross)	SilverLine	180	820	1600	290.0	3363 0944 54
3	Chisel (parallel)	ClassicLine	180	620	1400	250.0	3363 0942 58
3	Chisel (parallel)	ClassicLine	180	820	1600	290.0	3363 0942 59
4	Blunt tool	ClassicLine		620	1400	269.0	3363 0872 61
4	Blunt tool	ClassicLine		820	1600	309.0	3363 0822 63
4	Blunt tool	SilverLine		820	1600	309.0	3363 0944 55

Imperial

No.	Description	Remark	W (in.)	L (in.)	L _T (in.)	Wt (lb)	Part number
1	Moil point	ClassicLine		24.41	55.12	529.1	3363 0871 53
1	Moil point	ClassicLine		32.28	62.99	617.3	3363 0822 59
1	Moil point	SilverLine		32.28	62.99	617.3	3363 0944 53
2	Chisel (cross)	ClassicLine	7.09	24.41	55.12	551.1	3363 0859 79
2	Chisel (cross)	ClassicLine	7.09	32.28	62.99	639.3	3363 0822 61
2	Chisel (cross)	SilverLine	7.09	32.28	62.99	639.3	3363 0944 54
3	Chisel (parallel)	ClassicLine	7.09	24.41	55.12	551.1	3363 0942 58

No.	Description	Remark	W (in.)	L (in.)	L _T (in.)	Wt (lb)	Part number
3	Chisel (parallel)	ClassicLine	7.09	32.28	62.99	639.3	3363 0942 59
4	Blunt tool	ClassicLine		24.41	55.12	593.0	3363 0872 61
4	Blunt tool	ClassicLine		32.28	62.99	681.2	3363 0822 63
4	Blunt tool	SilverLine		32.28	62.99	681.2	3363 0944 55

HB 4200 DustProtector



Metric

No.	Description	Remark	W (mm)	L (mm)	L _T (mm)	Wt (kg)	Part number
1	Moil point	ClassicLine		575	1400	240.0	3363 0871 53
1	Moil point	ClassicLine		775	1600	280.0	3363 0822 59
1	Moil point	SilverLine		775	1600	280.0	3363 0944 53
2	Chisel (cross)	ClassicLine	180	575	1400	250.0	3363 0859 79
2	Chisel (cross)	ClassicLine	180	775	1600	290.0	3363 0822 61
2	Chisel (cross)	SilverLine	180	775	1600	290.0	3363 0944 54
3	Chisel (parallel)	ClassicLine	180	575	1400	250.0	3363 0942 58
3	Chisel (parallel)	ClassicLine	180	775	1600	290.0	3363 0942 59
4	Blunt tool	ClassicLine		575	1400	269.0	3363 0872 61
4	Blunt tool	ClassicLine		775	1600	309.0	3363 0822 63
4	Blunt tool	SilverLine		775	1600	309.0	3363 0944 55

Imperial

No.	Description	Remark	W (in.)	L (in.)	L _T (in.)	Wt (lb)	Part number
1	Moil point	ClassicLine		22.64	55.12	529.1	3363 0871 53
1	Moil point	ClassicLine		30.51	62.99	617.3	3363 0822 59
1	Moil point	SilverLine		30.51	62.99	617.3	3363 0944 53
2	Chisel (cross)	ClassicLine	7.09	22.64	55.12	551.1	3363 0859 79
2	Chisel (cross)	ClassicLine	7.09	30.51	62.99	639.3	3363 0822 61
2	Chisel (cross)	SilverLine	7.09	30.51	62.99	639.3	3363 0944 54
3	Chisel (parallel)	ClassicLine	7.09	22.64	55.12	551.1	3363 0942 58
3	Chisel (parallel)	ClassicLine	7.09	30.51	62.99	639.3	3363 0942 59
4	Blunt tool	ClassicLine		22.64	55.12	593.0	3363 0872 61
4	Blunt tool	ClassicLine		30.51	62.99	681.2	3363 0822 63
4	Blunt tool	SilverLine		30.51	62.99	681.2	3363 0944 55

Accessories

Hydraulic hoses

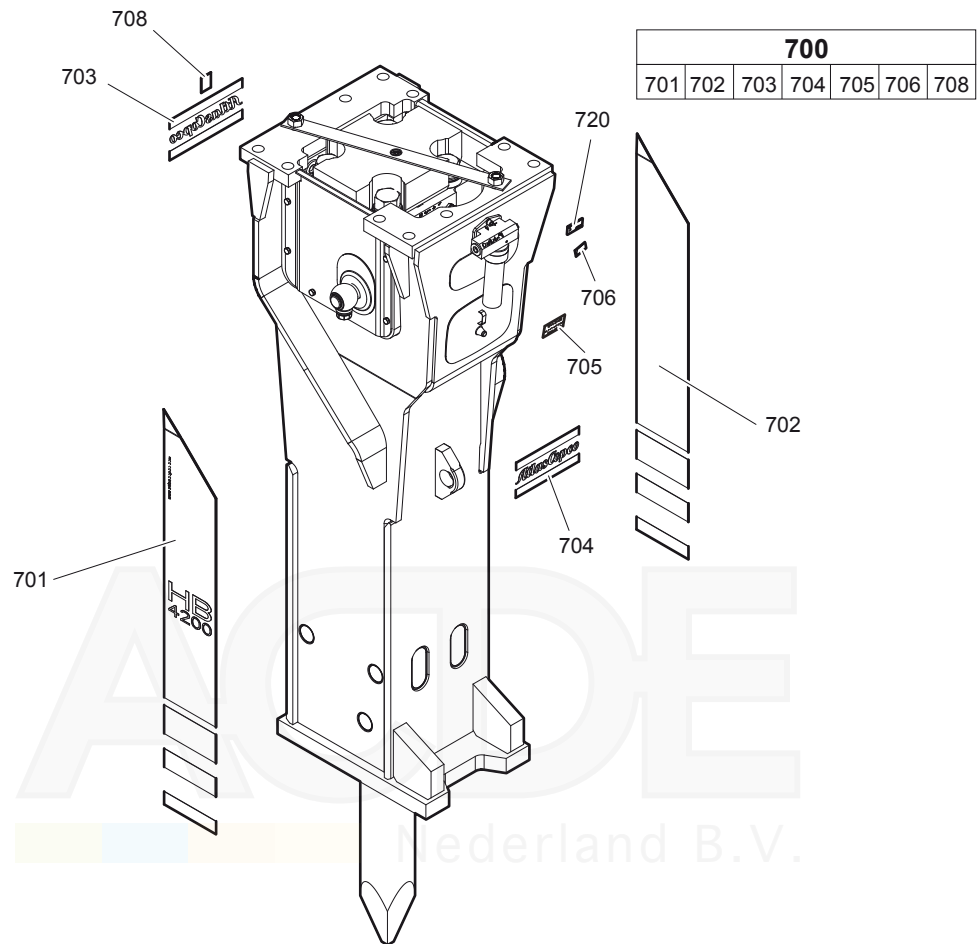
Description	Remark	Quantity	Part number
Hose	I.D. 32 (1 1/4"), both ends JIC 1 5/8", length 2800 mm (110 in.)	2	3361 8538 60
Hose	I.D. 32 (1 1/4"), both ends JIC 1 5/8", length 3500 mm (138 in.)	2	3361 8538 61

Optional equipment

Description	Remark	Quantity	Part number
Chisel paste 500 g (1.1 lbs) for ContiLube® II (carton of 12 pieces)		1	3363 0912 00
Grease gun for cartridge ContiLube® II		1	3363 0345 67
Grease nipple		1	3360 4337 74
Service box no. II with nitrogen cylinder	5 l	1	3363 0898 45
Service box no. III without nitrogen cylinder		1	3363 0949 40
Test gauge lower wear bush		1	3361 8521 75
Test gauge upper wear bush		1	3363 0949 52
Adapter plate matching the carrier Consult the Atlas Copco Customer Center/Dealer in your area.		1	-
Adapter kit for underwater applications		1	3363 0905 31
Base plate with threaded inserts		1	3363 0997 93
Bolt kit		1	3363 0873 04
Base plate with through borings		1	3363 1028 71
Bolt kit		1	3363 0945 76
Allen key	27 mm for bolt kit	1	3360 4789 49
Storage kit		1	3363 0980 75
Piston retainer		1	3363 0929 87
Cap		2	3361 3534 89
Protective cap		1	3361 3297 94
Transport safety device		1	3362 2616 98
Allen screw		2	3360 1141 51
Nut		2	3360 1032 55

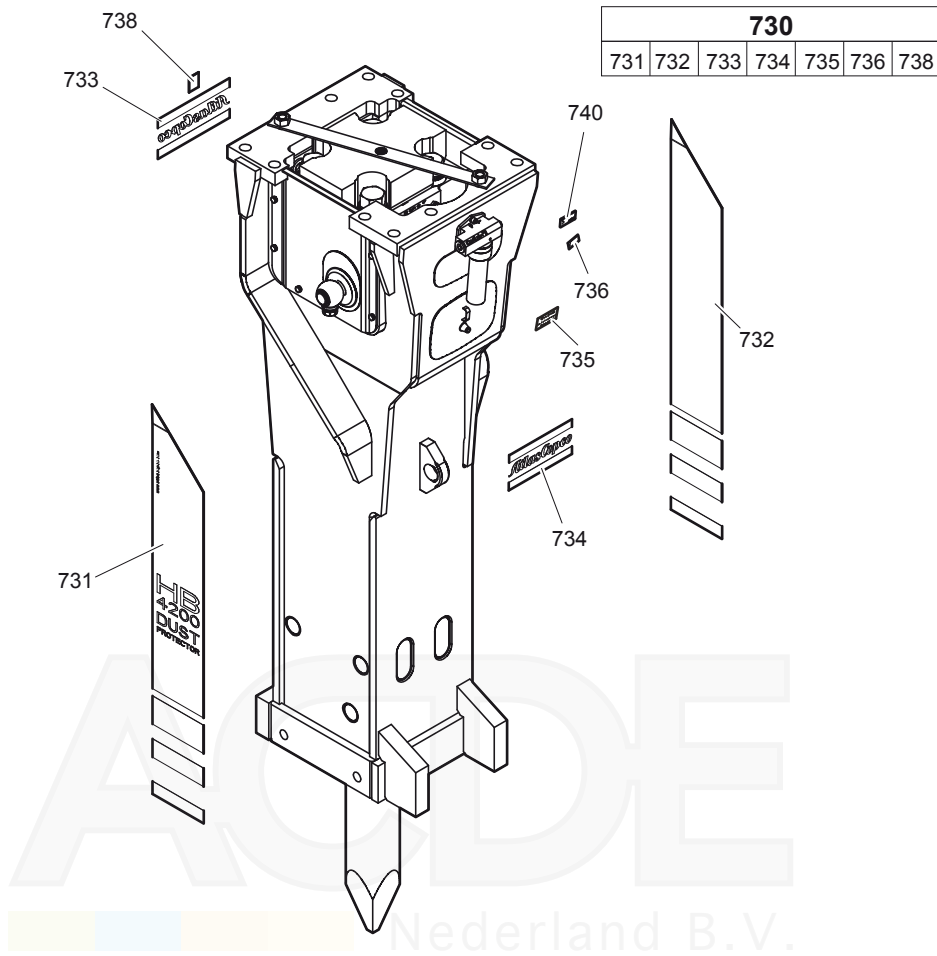
Kits

Label kit HB 4200



No.	Description	Remark	Quantity	Part number
700(701-708)	Label kit HB 4200		1	3363 0943 17
701	Label HB 4200 right		1	-
702	Label HB 4200 left		1	-
703	Label Atlas Copco		1	-
704	Label Atlas Copco		1	-
705	Label gas pressure		2	-
706	Lubricating symbol		1	-
708	Label noise level		1	-
720	Name plate		1	-

Label kit HB 4200 DustProtector



No.	Description	Remark	Quantity	Part number
730(731-738)	Label kit HB 4200 DustProtector		1	3363 0943 18
731	Label HB 4200 DustProtector left		1	-
732	Label HB 4200 DustProtector right		1	-
733	Label Atlas Copco		1	-
734	Label Atlas Copco		1	-
735	Label gas pressure		2	-
736	Lubricating symbol		1	-
738	Label noise level		1	-
740	Name plate		1	-

Seal kit

No.	Description	Remark	Quantity	Part number
	Seal kit		1	3363 0660 96
104	O-ring		1	3360 3143 64
105	Back-up ring		1	3360 3280 46
110	O-ring		2	3360 3143 73
112	O-ring		1	3361 0318 10
115	O-ring		1	3360 4781 71
123	O-ring		1	3360 3143 70
124	O-ring		1	3360 3143 75
125	Back-up ring		1	3363 0874 83
145	Seal kit		2	3361 8504 22
146	O-ring		2	3361 8462 82
147	Back-up ring		2	3361 8462 81
182	Plug		1	3360 4784 26
183	O-ring		1	3360 1751 25
203	Seal		1	3361 8462 77
204	Seal		1	3363 0981 38
290	Seal kit		2	3363 0855 82
291	Seal		1	3363 0833 74
292	Back-up ring		1	3363 0833 75
301	Seal		6	3362 2675 85
302	Seal		8	3362 2675 89
305	Wiper		1	3363 0836 71
390	Seal kit		2	3363 0855 83
391	Seal		1	3363 0833 76
392	Back-up ring		1	3363 0833 77
401	Seal		1	3362 2675 86
602	O-ring		1	3363 0832 45

Seal kit for swivel joint (ContiLube® II)

No.	Description	Remark	Quantity	Part number
	Seal kit		1	3363 0917 32

Plastic parts kit

No.	Description	Remark	Quantity	Part number
	Plastic parts kit		1	3363 0948 85
2	Elastic pad		1	3361 3567 89
3	Shock absorber		2	3361 3569 25
4	Guide plate		2	3362 2698 03
5	Guide plate		2	3362 2652 15
6	Plate		1	3363 0862 37

Tensioning bolt kit

No.	Description	Remark	Quantity	Part number
	Tensioning bolt kit		1	3363 0943 53
192	Tensioning bolt		2	3363 0846 21
193	Washer		2	3363 0936 53
487	Threaded insert		2	3363 0853 21
	Anti-Seize 120g		1	3363 0943 00

DustProtector kit

No.	Description	Remark	Quantity	Part number
	DustProtector kit		1	3363 0943 89
11	Floating ring		1	3363 0706 65
12	Counter ring		1	3363 0338 01
13	Guide ring		1	3363 0337 33
14	Bolt		2	3363 0706 44
15	Locking bush		2	3361 8543 63

Noise protection kit

No.	Description	Remark	Quantity	Part number
	Noise protection kit		1	3363 0980 63
31	Plug		2	3363 0860 13
32	Plug		11	3363 0860 17
33	Cover		1	3363 0311 83
34	Cover		2	3363 0311 81
35	Cover		1	3363 0680 99

Lower breaker part kit (bronze)

No.	Description	Remark	Quantity	Part number
	Lower breaker part kit	HB 4200 with lower wear bush bronze	1	3363 0943 77
401	Retainer bar		2	3361 3315 29
405	Bolt		2	3362 2615 40
409	Plug		4	3362 2629 21
482	Buffer ring		1	3363 0690 83
483	Wear bush		1	3363 0691 37
484	Wear bush	bronze	1	3363 0885 11
485	Bolt		2	3361 8543 47
486	Locking bush		2	3361 8543 63
489	Locking bush		2	3362 2604 33
	Chisel paste		1	3315 0381 00
	Test gauge		1	3361 8521 75

Lower breaker part kit (steel)

No.	Description	Remark	Quantity	Part number
	Lower breaker part kit	HB 4200 with lower wear bush steel	1	3363 1034 08
401	Retainer bar		2	3361 3315 29
405	Bolt		2	3362 2615 40
409	Plug		4	3362 2629 21
482	Buffer ring		1	3363 0690 83
483	Wear bush		1	3363 0691 37
484	Wear bush	steel	1	3363 0886 53
485	Bolt		2	3361 8543 47
486	Locking bush		2	3361 8543 63
489	Locking bush		2	3362 2604 33
	Chisel paste		1	3315 0381 00
	Test gauge		1	3361 8521 75

Lower breaker part kit DustProtector (bronze)

No.	Description	Remark	Quantity	Part number
	Lower breaker part kit	HB 4200 DustProtector with lower wear bush bronze	1	3363 0943 78
18	Base for wiper		1	3363 0886 51
19	Wiper		1	3363 0342 65
401	Retainer bar		2	3361 3315 29
405	Bolt		2	3362 2615 40
409	Plug		4	3362 2629 21
482	Buffer ring		1	3363 0690 83
483	Wear bush		1	3363 0691 37
484	Wear bush	bronze	1	3363 0885 11
485	Bolt		2	3361 8543 47
486	Locking bush		2	3361 8543 63
489	Locking bush		2	3362 2604 33
	Chisel paste		1	3315 0381 00
	Test gauge		1	3361 8521 75

Lower breaker part kit DustProtector (steel)

No.	Description	Remark	Quantity	Part number
	Lower breaker part kit	HB 4200 DustProtector with lower wear bush steel	1	3363 1034 09
18	Base for wiper		1	3363 0886 51
19	Wiper		1	3363 0342 65
401	Retainer bar		2	3361 3315 29
405	Bolt		2	3362 2615 40
409	Plug		4	3362 2629 21
482	Buffer ring		1	3363 0690 83
483	Wear bush		1	3363 0691 37
484	Wear bush	steel	1	3363 0886 53
485	Bolt		2	3361 8543 47
486	Locking bush		2	3361 8543 63
489	Locking bush		2	3362 2604 33
	Chisel paste		1	3315 0381 00
	Test gauge		1	3361 8521 75

Expansion bolt kit

No.	Description	Remark	Quantity	Part number
	Expansion bolt kit		1	3363 0980 89
102	Allen screw		4	3361 8515 91
103	Washer		4	3363 0922 53
138	Threaded insert		4	3363 0899 16

Nederland B.V.

Accumulator repair kit

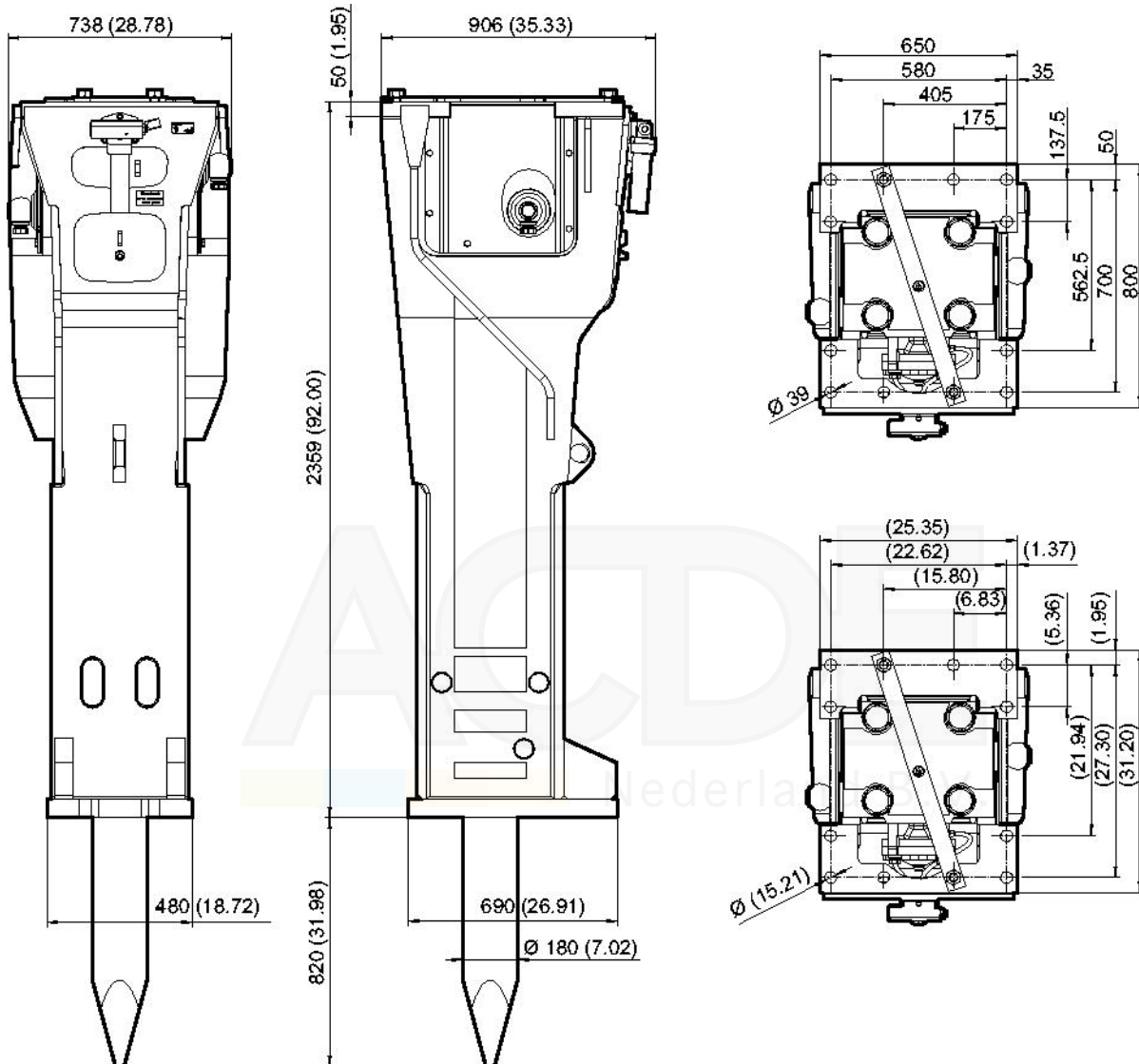
Accumulators are pressure containers in the context of the European Pressure Equipment Directive 97/23/EC. You have to observe all safety instructions comply with the laws and all national/regional regulations of your country if you repair accumulators.

No.	Description	Remark	Quantity	Part number
	Accumulator repair kit		1	3363 0898 50
	Diaphragm		1	3361 3290 22
	Filling screw		1	3360 3322 59
	O-ring		1	3360 3144 60
	Protective cap		1	3361 3350 25
	O-ring		1	3360 3143 64
	Back-up ring		1	3360 3280 46

Dimensions

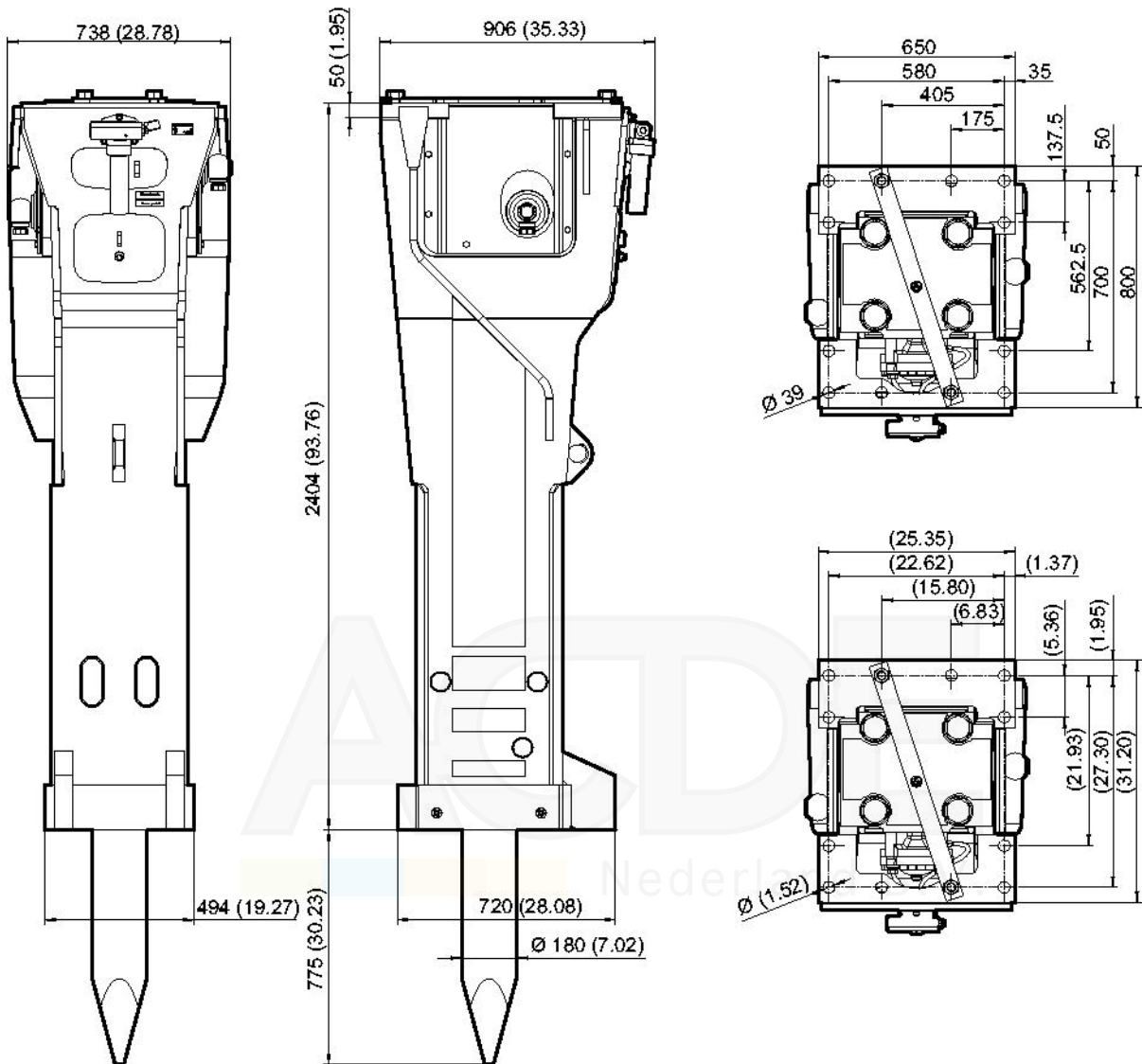
Dimensions HB 4200

Metric mm and (imperial inch)



Dimensions HB 4200 DustProtector

Metric mm and (imperial inch)





Unauthorized use or copying of all or part of the contents is prohibited. This specifically applies to trademarks, model designations, parts numbers and drawings.

© 2009 Atlas Copco Construction Tools GmbH | No. 3390 7040 01 | 2009-03-26